



Datasheet for ABIN7257860 anti-PSD2 antibody



[Go to Product page](#)

1 Image

Overview

Quantity:	200 µL
Target:	PSD2
Reactivity:	Human, Mouse, Rat
Host:	Rabbit
Clonality:	Polyclonal
Conjugate:	This PSD2 antibody is un-conjugated
Application:	Western Blotting (WB)

Product Details

Immunogen:	Recombinant fusion protein of human PSD2 (NP_115665.1).
Isotype:	IgG
Characteristics:	Polyclonal Antibody
Purification:	Affinity purification

Target Details

Target:	PSD2
Alternative Name:	PSD2 (PSD2 Products)
Background:	PSD2 (Pleckstrin And Sec7 Domain Containing 2) is a Protein Coding gene. Diseases associated with PSD2 include Cone-Rod Dystrophy 1 and Gerstmann Syndrome. Among its related pathways are Endocytosis. Gene Ontology (GO) annotations related to this gene include phospholipid binding and ARF guanyl-nucleotide exchange factor activity. An important paralog

Target Details

of this gene is PSD.

Molecular Weight: Observed_MW: 85 kDa
Calculated_MW: 84 kDa

Gene ID: 84249

UniProt: [Q9BQI7](#)

Application Details

Application Notes: WB 1:500-1:2000

Restrictions: For Research Use only

Handling

Format: Liquid

Concentration: 1 mg/mL

Buffer: PBS with 0.02 % sodium azide, 50 % glycerol, pH 7.3

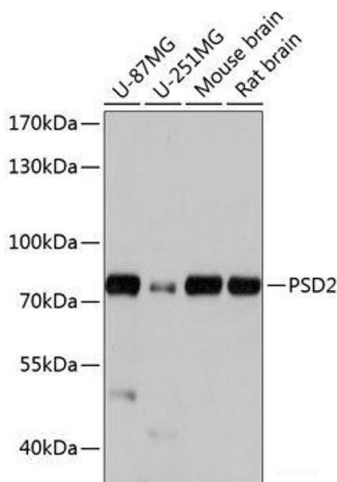
Preservative: Sodium azide

Precaution of Use: This product contains Sodium azide: a POISONOUS AND HAZARDOUS SUBSTANCE which should be handled by trained staff only.

Storage: -20 °C

Storage Comment: Store at -20°C. Avoid freeze / thaw cycles.

Images



Western Blotting

Image 1. Western blot analysis of extracts of various cell lines using PSD2 Polyclonal Antibody at dilution of 1:1000.