

Datasheet for ABIN7257902

**anti-SPARC antibody**

## 4 Images

[Go to Product page](#)

## Overview

Quantity:	200 µL
Target:	SPARC
Reactivity:	Human, Mouse, Rat
Host:	Rabbit
Clonality:	Polyclonal
Conjugate:	This SPARC antibody is un-conjugated
Application:	Western Blotting (WB), Immunofluorescence (IF)

## Product Details

Immunogen:	Recombinant fusion protein of human SPARC (NP_003109.1).
Isotype:	IgG
Characteristics:	Polyclonal Antibody
Purification:	Affinity purification

## Target Details

Target:	SPARC
Alternative Name:	SPARC ( <a href="#">SPARC Products</a> )
Background:	This gene encodes a cysteine-rich acidic matrix-associated protein. The encoded protein is required for the collagen in bone to become calcified but is also involved in extracellular matrix synthesis and promotion of changes to cell shape. The gene product has been associated with tumor suppression but has also been correlated with metastasis based on changes to cell

## Target Details

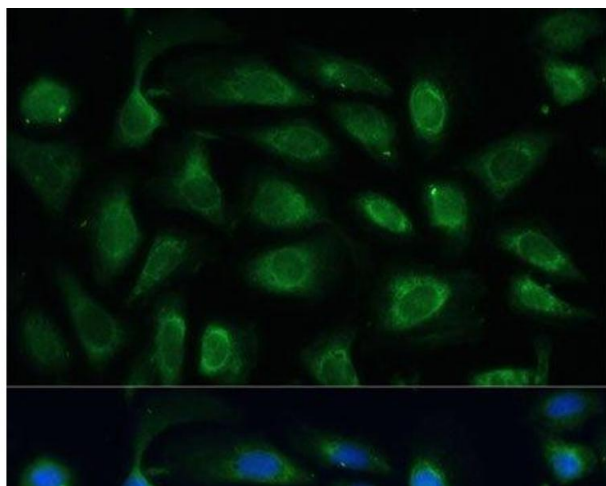
	shape which can promote tumor cell invasion. Three transcript variants encoding different isoforms have been found for this gene.
Molecular Weight:	Observed_MW: 35 kDa Calculated_MW: 34 kDa
Gene ID:	6678
UniProt:	<a href="#">P09486</a>
Pathways:	<a href="#">Autophagy</a>

## Application Details

Application Notes:	WB 1:500-1:2000 IF 1:50-1:100
Restrictions:	For Research Use only

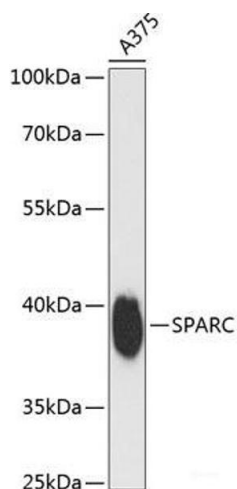
## Handling

Format:	Liquid
Concentration:	1 mg/mL
Buffer:	PBS with 0.02 % sodium azide, 50 % glycerol, pH 7.3
Preservative:	Sodium azide
Precaution of Use:	This product contains Sodium azide: a POISONOUS AND HAZARDOUS SUBSTANCE which should be handled by trained staff only.
Storage:	-20 °C
Storage Comment:	Store at -20°C. Avoid freeze / thaw cycles.



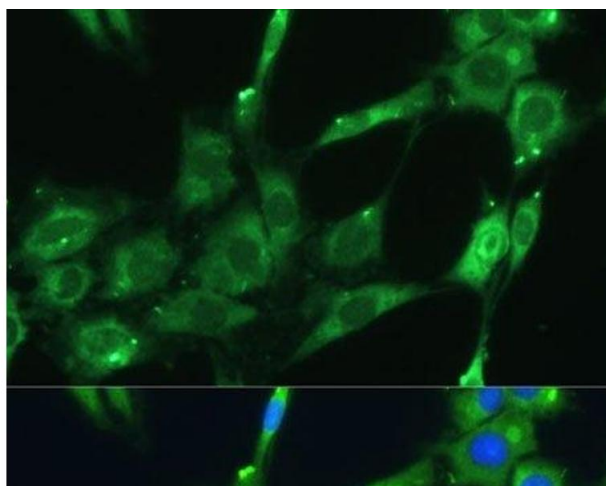
#### Immunofluorescence

**Image 1.** Immunofluorescence analysis of U-2 OS cells using SPARC Polyclonal Antibody at dilution of 1:100 (40x lens). Blue: DAPI for nuclear staining.



#### Western Blotting

**Image 2.** Western blot analysis of extracts of A375 cells using SPARC Polyclonal Antibody at dilution of 1:3000.



#### Immunofluorescence

**Image 3.** Immunofluorescence analysis of C6 cells using SPARC Polyclonal Antibody at dilution of 1:100 (40x lens). Blue: DAPI for nuclear staining.

Please check the [product details page](#) for more images. Overall 4 images are available for ABIN7257902.