



[Go to Product page](#)

Datasheet for ABIN7257908
anti-CDK5R1 antibody

1 Image

Overview

Quantity:	200 µL
Target:	CDK5R1
Reactivity:	Human, Mouse, Rat
Host:	Rabbit
Clonality:	Polyclonal
Conjugate:	This CDK5R1 antibody is un-conjugated
Application:	Immunofluorescence (IF)

Product Details

Immunogen:	Recombinant fusion protein of human CDK5R1 (NP_003876.1).
Isotype:	IgG
Characteristics:	Polyclonal Antibody
Purification:	Affinity purification

Target Details

Target:	CDK5R1
Alternative Name:	CDK5R1 (CDK5R1 Products)
Target Type:	Viral Protein
Background:	The protein encoded by this gene (p35) is a neuron-specific activator of cyclin-dependent kinase 5 (CDK5), the activation of CDK5 is required for proper development of the central

Target Details

nervous system. The p35 form of this protein is proteolytically cleaved by calpain, generating a p25 form. The cleavage of p35 into p25 results in relocalization of the protein from the cell periphery to nuclear and perinuclear regions. P25 deregulates CDK5 activity by prolonging its activation and changing its cellular location. The p25 form accumulates in the brain neurons of patients with Alzheimer's disease. This accumulation correlates with an increase in CDK5 kinase activity, and may lead to aberrantly phosphorylated forms of the microtubule-associated protein tau, which contributes to Alzheimer's disease.

Gene ID: 8851

UniProt: [Q15078](#)

Pathways: [Stem Cell Maintenance](#), [Regulation of Cell Size](#), [Positive Regulation of Endopeptidase Activity](#)

Application Details

Application Notes: IF 1:50-1:200

Restrictions: For Research Use only

Handling

Format: Liquid

Concentration: 1 mg/mL

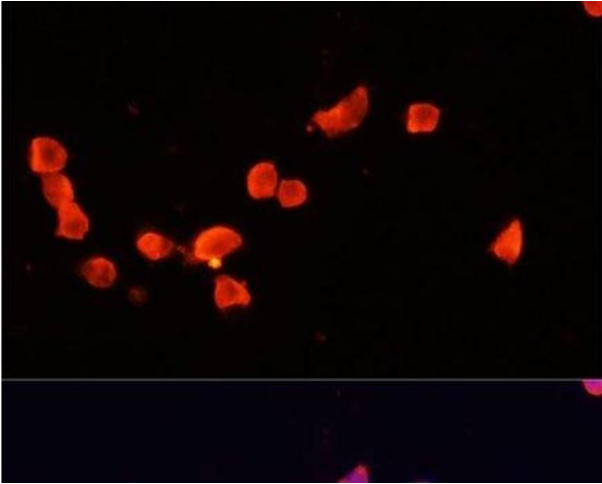
Buffer: PBS with 0.02 % sodium azide, 50 % glycerol, pH 7.3

Preservative: Sodium azide

Precaution of Use: This product contains Sodium azide: a POISONOUS AND HAZARDOUS SUBSTANCE which should be handled by trained staff only.

Storage: -20 °C

Storage Comment: Store at -20°C. Avoid freeze / thaw cycles.



Immunofluorescence

Image 1. Immunofluorescence analysis of SH-SY5Y cells using CDK5R1 Polyclonal Antibody at dilution of 1:100. Blue: DAPI for nuclear staining.