



[Go to Product page](#)

Datasheet for ABIN7257918

## anti-SMYD3 antibody

### 3 Images

#### Overview

Quantity:	200 µL
Target:	SMYD3
Reactivity:	Human, Mouse, Rat
Host:	Rabbit
Clonality:	Polyclonal
Conjugate:	This SMYD3 antibody is un-conjugated
Application:	Immunofluorescence (IF)

#### Product Details

Immunogen:	A synthetic peptide of human SMYD3 (NP_001161212.1).
Isotype:	IgG
Characteristics:	Polyclonal Antibody
Purification:	Affinity purification

#### Target Details

Target:	SMYD3
Alternative Name:	SMYD3 ( <a href="#">SMYD3 Products</a> )
Background:	This gene encodes a histone methyltransferase which functions in RNA polymerase II complexes by an interaction with a specific RNA helicase. Multiple transcript variants encoding different isoforms have been found for this gene.

## Target Details

Gene ID: 64754

UniProt: [Q9H7B4](#)

## Application Details

Application Notes: IF 1:50-1:200

Restrictions: For Research Use only

## Handling

Format: Liquid

Concentration: 1 mg/mL

Buffer: PBS with 0.02 % sodium azide, 50 % glycerol, pH 7.3

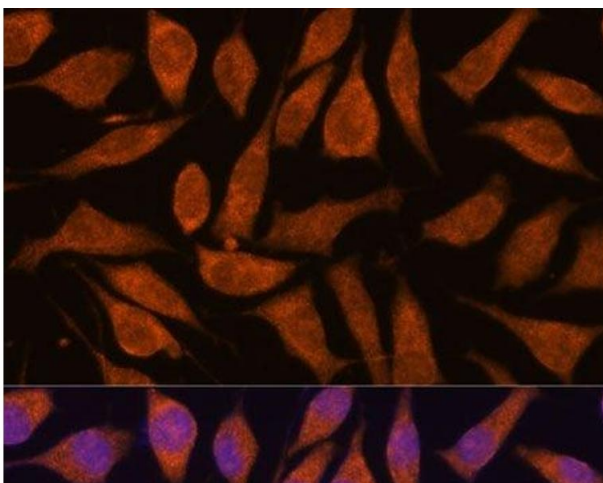
Preservative: Sodium azide

Precaution of Use: This product contains Sodium azide: a POISONOUS AND HAZARDOUS SUBSTANCE which should be handled by trained staff only.

Storage: -20 °C

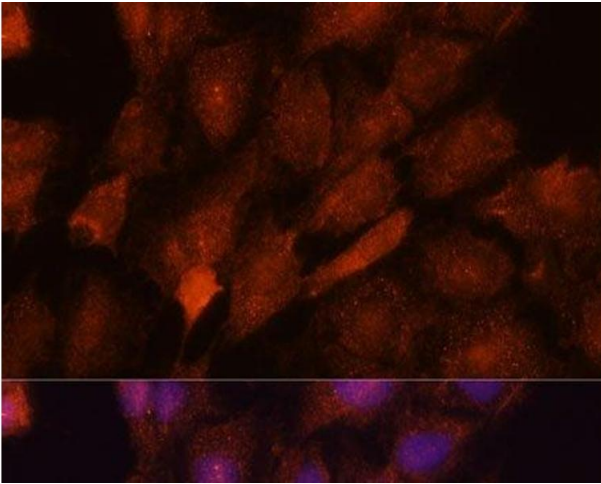
Storage Comment: Store at -20°C. Avoid freeze / thaw cycles.

## Images



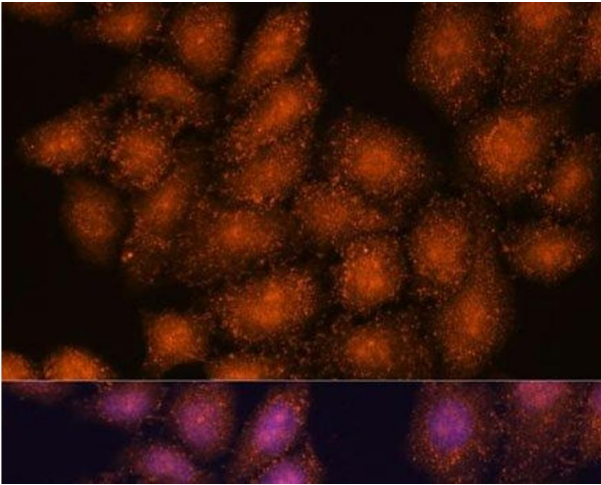
### Immunofluorescence

**Image 1.** Immunofluorescence analysis of L929 cells using SMYD3 Polyclonal Antibody at dilution of 1:100. Blue: DAPI for nuclear staining.



#### Immunofluorescence

**Image 2.** Immunofluorescence analysis of C6 cells using SMYD3 Polyclonal Antibody at dilution of 1:100. Blue: DAPI for nuclear staining.



#### Immunofluorescence

**Image 3.** Immunofluorescence analysis of HeLa cells using SMYD3 Polyclonal Antibody at dilution of 1:100. Blue: DAPI for nuclear staining.