



[Go to Product page](#)

Datasheet for ABIN7257964  
**anti-CXCL10 antibody**

1 Image

### Overview

Quantity:	200 µL
Target:	CXCL10
Reactivity:	Human
Host:	Rabbit
Clonality:	Polyclonal
Conjugate:	This CXCL10 antibody is un-conjugated
Application:	Western Blotting (WB)

### Product Details

Immunogen:	Recombinant fusion protein of human CXCL10 (NP_001556.2).
Isotype:	IgG
Characteristics:	Polyclonal Antibody
Purification:	Affinity purification

### Target Details

Target:	CXCL10
Alternative Name:	CXCL10 ( <a href="#">CXCL10 Products</a> )
Background:	This antimicrobial gene encodes a chemokine of the CXC subfamily and ligand for the receptor CXCR3. Binding of this protein to CXCR3 results in pleiotropic effects, including stimulation of monocytes, natural killer and T-cell migration, and modulation of adhesion molecule expression.

## Target Details

Molecular Weight: Observed\_MW: 11 kDa  
Calculated\_MW: 10 kDa

Gene ID: 3627

UniProt: [P02778](#)

## Application Details

Application Notes: WB 1:500-1:2000

Restrictions: For Research Use only

## Handling

Format: Liquid

Concentration: 1 mg/mL

Buffer: PBS with 0.02 % sodium azide, 50 % glycerol, pH 7.3

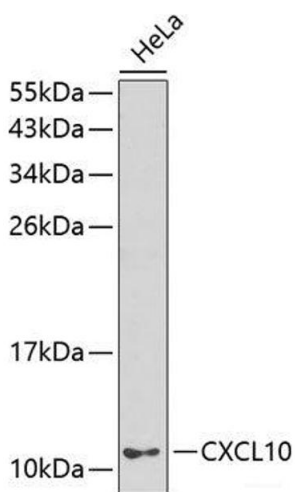
Preservative: Sodium azide

Precaution of Use: This product contains Sodium azide: a POISONOUS AND HAZARDOUS SUBSTANCE which should be handled by trained staff only.

Storage: -20 °C

Storage Comment: Store at -20°C. Avoid freeze / thaw cycles.

## Images



### Western Blotting

**Image 1.** Western blot analysis of extracts of HeLa cells using CXCL10 Polyclonal Antibody.