



[Go to Product page](#)

Datasheet for ABIN7257974  
**anti-HIGD1A antibody**

2 Images

Overview

Quantity:	200 µL
Target:	HIGD1A
Reactivity:	Human
Host:	Rabbit
Clonality:	Polyclonal
Conjugate:	This HIGD1A antibody is un-conjugated
Application:	Immunofluorescence (IF), Immunohistochemistry (IHC)

Product Details

Immunogen:	A synthetic peptide of human HIGD1A (NP_054775.2).
Isotype:	IgG
Characteristics:	Polyclonal Antibody
Purification:	Affinity purification

Target Details

Target:	HIGD1A
Alternative Name:	HIGD1A ( <a href="#">HIGD1A Products</a> )
Background:	HIGD1A (HIG1 Hypoxia Inducible Domain Family Member 1A) is a Protein Coding gene. Diseases associated with HIGD1A include Hypoxia and Behr Syndrome. Among its related pathways are Regulation of activated PAK-2p34 by proteasome mediated degradation and Cellular Senescence (REACTOME). An important paralog of this gene is HIGD1C.

## Target Details

Gene ID: 25994

UniProt: [Q9Y241](#)

## Application Details

Application Notes: IHC 1:50-1:100 IF 1:50-1:100

Restrictions: For Research Use only

## Handling

Format: Liquid

Concentration: 1 mg/mL

Buffer: PBS with 0.02 % sodium azide, 50 % glycerol, pH 7.3

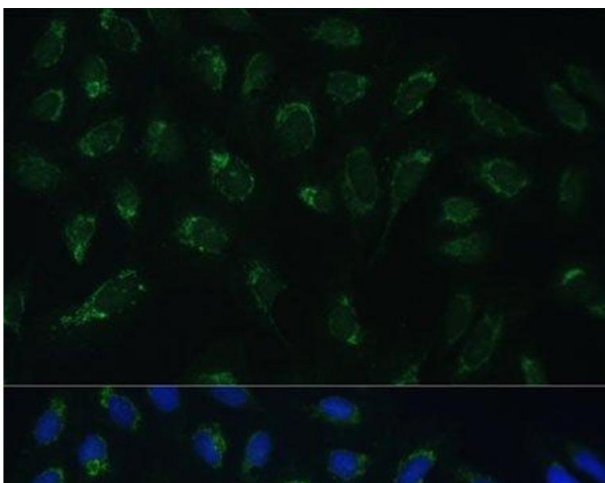
Preservative: Sodium azide

Precaution of Use: This product contains Sodium azide: a POISONOUS AND HAZARDOUS SUBSTANCE which should be handled by trained staff only.

Storage: -20 °C

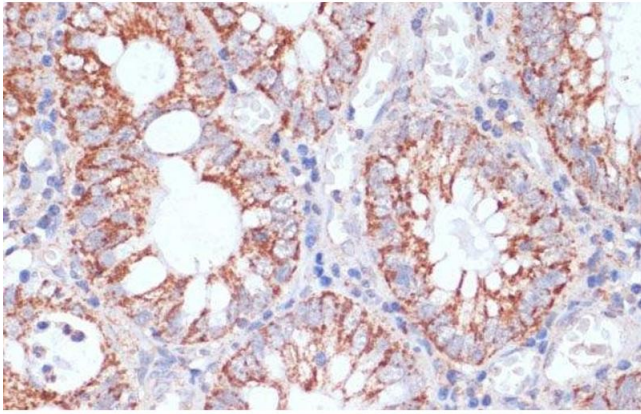
Storage Comment: Store at -20°C. Avoid freeze / thaw cycles.

## Images



### Immunofluorescence

**Image 1.** Immunofluorescence analysis of U-2 OS cells using HIGD1A Polyclonal Antibody at dilution of 1:100 (40x lens). Blue: DAPI for nuclear staining.



### Immunohistochemistry (Paraffin-embedded Sections)

**Image 2.** Immunohistochemistry of paraffin-embedded Human colon carcinoma using HIGD1A Polyclonal Antibody at dilution of 1:100 (40x lens).