

Datasheet for ABIN7257994

**anti-MYH13 antibody****2** Images[Go to Product page](#)

## Overview

Quantity:	200 µL
Target:	MYH13
Reactivity:	Mouse, Rat
Host:	Rabbit
Clonality:	Polyclonal
Conjugate:	This MYH13 antibody is un-conjugated
Application:	Immunofluorescence (IF)

## Product Details

Immunogen:	Recombinant fusion protein of human MYH13 (NP_003793.2).
Isotype:	IgG
Characteristics:	Polyclonal Antibody
Purification:	Affinity purification

## Target Details

Target:	MYH13
Alternative Name:	MYH13 ( <a href="#">MYH13 Products</a> )
Background:	MYH13 (Myosin Heavy Chain 13) is a Protein Coding gene. Diseases associated with MYH13 include Ventricular Tachycardia, Catecholaminergic Polymorphic, 1, With Or Without Atrial Dysfunction And/Or Dilated Cardiomyopathy. Among its related pathways are Actin Nucleation by ARP-WASP Complex and Cytoskeleton remodeling Regulation of actin cytoskeleton by Rho

## Target Details

GTPases. Gene Ontology (GO) annotations related to this gene include actin binding and motor activity. An important paralog of this gene is MYH2.

Gene ID: 8735

UniProt: [Q9UKX3](#)

## Application Details

Application Notes: IF 1:50-1:100

Restrictions: For Research Use only

## Handling

Format: Liquid

Concentration: 1 mg/mL

Buffer: PBS with 0.02 % sodium azide, 50 % glycerol, pH 7.3

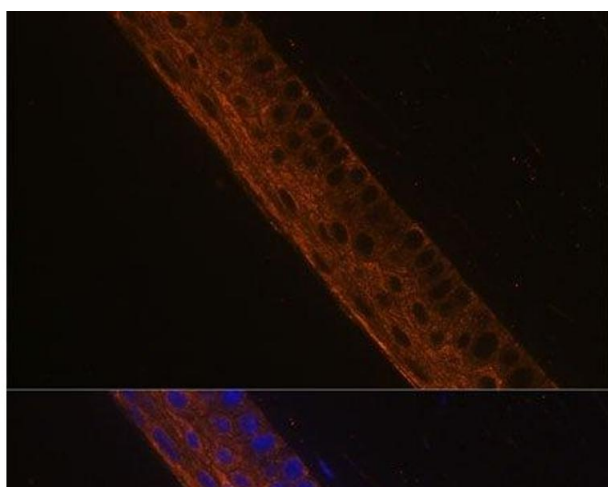
Preservative: Sodium azide

Precaution of Use: This product contains Sodium azide: a POISONOUS AND HAZARDOUS SUBSTANCE which should be handled by trained staff only.

Storage: -20 °C

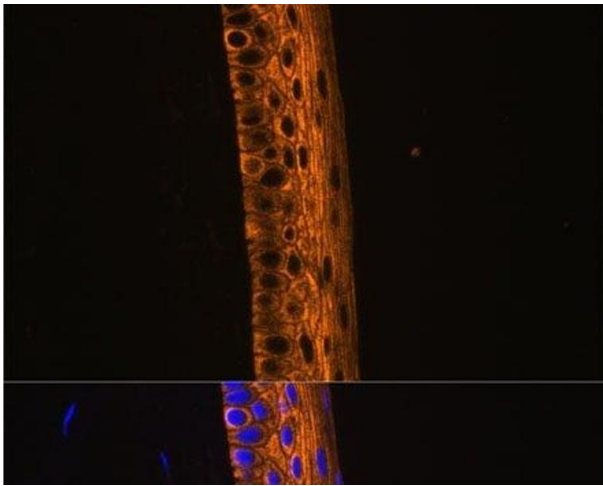
Storage Comment: Store at -20°C. Avoid freeze / thaw cycles.

## Images



### Immunofluorescence

**Image 1.** Immunofluorescence analysis of Mouse eye using MYH13 Polyclonal Antibody at dilution of 1:100 (40x lens). Blue: DAPI for nuclear staining.



#### Immunofluorescence

**Image 2.** Immunofluorescence analysis of Rat eye using MYH13 Polyclonal Antibody at dilution of 1:100 (40x lens). Blue: DAPI for nuclear staining.