

Datasheet for ABIN7258046

anti-JHDM1D antibody**2** Images[Go to Product page](#)

Overview

Quantity:	200 µL
Target:	JHDM1D
Reactivity:	Human
Host:	Rabbit
Clonality:	Polyclonal
Conjugate:	This JHDM1D antibody is un-conjugated
Application:	Immunofluorescence (IF)

Product Details

Immunogen:	Recombinant fusion protein of mouse KDM7A (NP_001028602.2).
Isotype:	IgG
Characteristics:	Polyclonal Antibody
Purification:	Affinity purification

Target Details

Target:	JHDM1D
Alternative Name:	KDM7A (JHDM1D Products)
Background:	KDM7A (Lysine Demethylase 7A) is a Protein Coding gene. Diseases associated with KDM7A include Syndromic X-Linked Intellectual Disability Siderius Type. Among its related pathways are Chromatin organization and Oncogenic MAPK signaling. Gene Ontology (GO) annotations related to this gene include iron ion binding and oxidoreductase activity, acting on paired

Target Details

donors, with incorporation or reduction of molecular oxygen, 2-oxoglutarate as one donor, and incorporation of one atom each of oxygen into both donors. An important paralog of this gene is PHF8.

Gene ID: 338523

UniProt: [Q3UWM4](#)

Application Details

Application Notes: IF 1:50-1:200

Restrictions: For Research Use only

Handling

Format: Liquid

Concentration: 1 mg/mL

Buffer: PBS with 0.02 % sodium azide, 50 % glycerol, pH 7.3

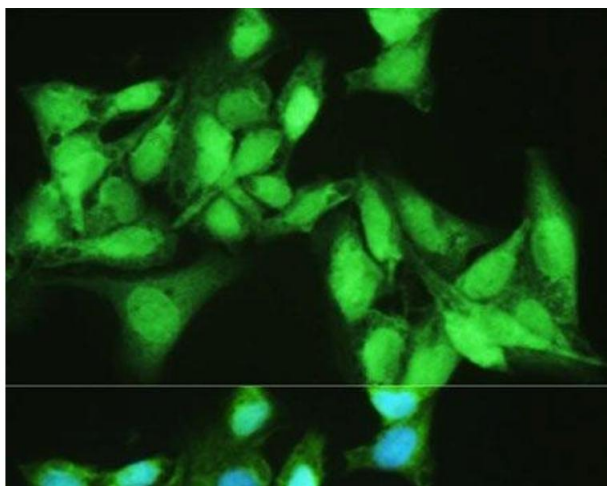
Preservative: Sodium azide

Precaution of Use: This product contains Sodium azide: a POISONOUS AND HAZARDOUS SUBSTANCE which should be handled by trained staff only.

Storage: -20 °C

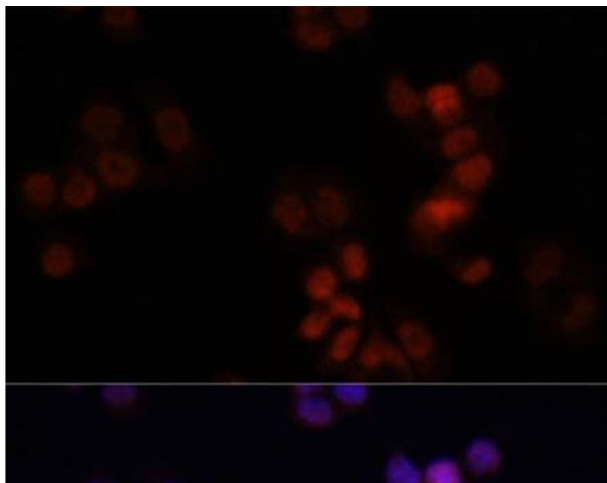
Storage Comment: Store at -20°C. Avoid freeze / thaw cycles.

Images



Immunofluorescence

Image 1. Immunofluorescence analysis of U2OS cells using KDM7A Polyclonal Antibody at dilution of 1:100. Blue: DAPI for nuclear staining.



Immunofluorescence

Image 2. Immunofluorescence analysis of HCT116 cells using KDM7A Polyclonal Antibody at dilution of 1:150. Blue: DAPI for nuclear staining.