

Datasheet for ABIN7258054

anti-ALOX12 antibody[Go to Product page](#)

4 Images

Overview

Quantity:	200 µL
Target:	ALOX12
Reactivity:	Human, Mouse, Rat
Host:	Rabbit
Clonality:	Polyclonal
Conjugate:	This ALOX12 antibody is un-conjugated
Application:	Immunohistochemistry (IHC), Immunofluorescence (IF)

Product Details

Immunogen:	Recombinant fusion protein of human ALOX12 (NP_000688.2).
Isotype:	IgG
Characteristics:	Polyclonal Antibody
Purification:	Affinity purification

Target Details

Target:	ALOX12
Alternative Name:	ALOX12 (ALOX12 Products)
Background:	This gene encodes a member of the lipoxygenase family of proteins. The encoded enzyme acts on different polyunsaturated fatty acid substrates to generate bioactive lipid mediators including eicosanoids and lipoxins. The encoded enzyme and its reaction products have been shown to regulate platelet function. Elevated expression of this gene has been observed in

Target Details

pancreatic islets derived from human diabetes patients. Allelic variants in this gene may be associated with susceptibility to toxoplasmosis. Multiple pseudogenes of this gene have been identified in the human genome.

Gene ID: 239

UniProt: [P18054](#)

Pathways: [Positive Regulation of Endopeptidase Activity](#)

Application Details

Application Notes: IHC 1:50-1:200 IF 1:50-1:200

Restrictions: For Research Use only

Handling

Format: Liquid

Concentration: 1 mg/mL

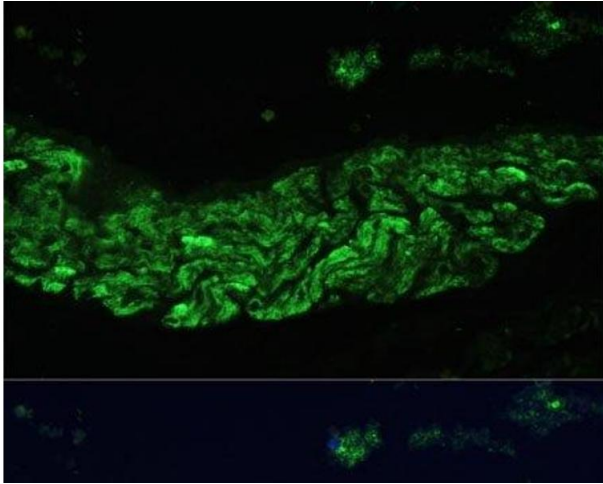
Buffer: PBS with 0.02 % sodium azide, 50 % glycerol, pH 7.3

Preservative: Sodium azide

Precaution of Use: This product contains Sodium azide: a POISONOUS AND HAZARDOUS SUBSTANCE which should be handled by trained staff only.

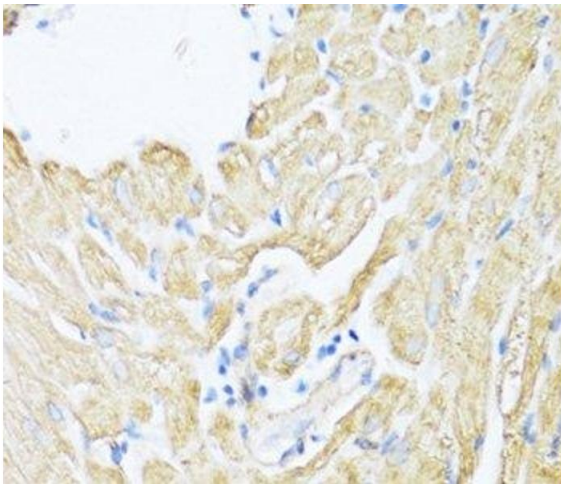
Storage: -20 °C

Storage Comment: Store at -20°C. Avoid freeze / thaw cycles.



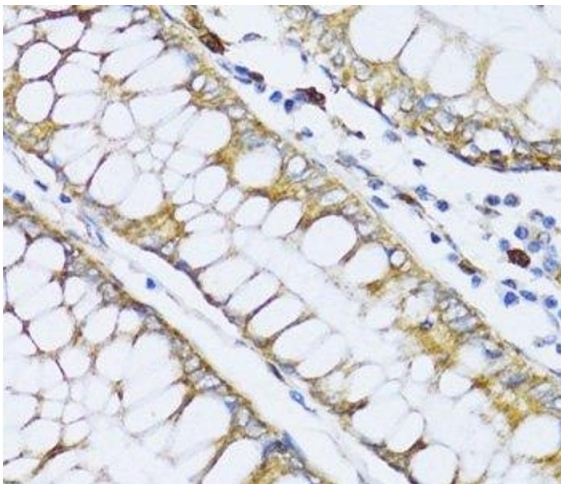
Immunofluorescence

Image 1. Immunofluorescence analysis of Rat lung using ALOX12 Polyclonal Antibody at dilution of 1:100 (40x lens). Blue: DAPI for nuclear staining.



Immunohistochemistry (Paraffin-embedded Sections)

Image 2. Immunohistochemistry of paraffin-embedded Rat heart using ALOX12 Polyclonal Antibody at dilution of 1:100 (40x lens).



Immunohistochemistry (Paraffin-embedded Sections)

Image 3. Immunohistochemistry of paraffin-embedded Human colon carcinoma using ALOX12 Polyclonal Antibody at dilution of 1:100 (40x lens).

Please check the [product details page](#) for more images. Overall 4 images are available for ABIN7258054.