

Datasheet for ABIN7258068

**anti-Cyclin G1 antibody**[Go to Product page](#)**1** Image

## Overview

Quantity:	200 µL
Target:	Cyclin G1 (CCNG1)
Reactivity:	Human, Mouse
Host:	Rabbit
Clonality:	Polyclonal
Conjugate:	This Cyclin G1 antibody is un-conjugated
Application:	Immunofluorescence (IF)

## Product Details

Immunogen:	Recombinant fusion protein of human CCNG1 (NP_004051.1).
Isotype:	IgG
Characteristics:	Polyclonal Antibody
Purification:	Affinity purification

## Target Details

Target:	Cyclin G1 (CCNG1)
Alternative Name:	CCNG1 ( <a href="#">CCNG1 Products</a> )
Background:	The eukaryotic cell cycle is governed by cyclin-dependent protein kinases (CDKs) whose activities are regulated by cyclins and CDK inhibitors. The protein encoded by this gene is a member of the cyclin family and contains the cyclin box. The encoded protein lacks the protein destabilizing (PEST) sequence that is present in other family members. Transcriptional

## Target Details

activation of this gene can be induced by tumor protein p53. Two transcript variants encoding the same protein have been identified for this gene.

Gene ID: 900

UniProt: [P51959](#)

Pathways: [p53 Signaling](#)

## Application Details

Application Notes: IF 1:50-1:200

Restrictions: For Research Use only

## Handling

Format: Liquid

Concentration: 1 mg/mL

Buffer: PBS with 0.02 % sodium azide, 50 % glycerol, pH 7.3

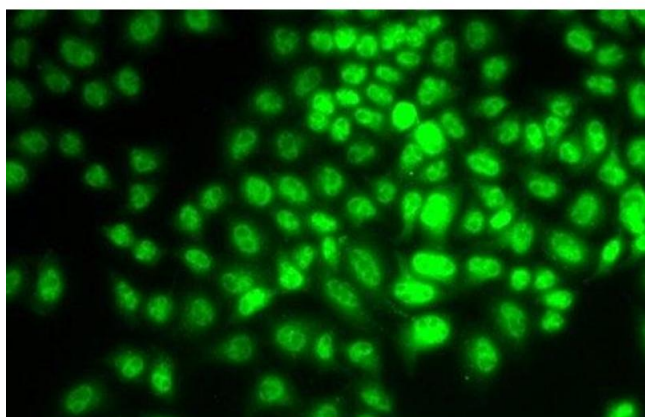
Preservative: Sodium azide

Precaution of Use: This product contains Sodium azide: a POISONOUS AND HAZARDOUS SUBSTANCE which should be handled by trained staff only.

Storage: -20 °C

Storage Comment: Store at -20°C. Avoid freeze / thaw cycles.

## Images



### Immunofluorescence

**Image 1.** Immunofluorescence analysis of HeLa cells using CCNG1 Polyclonal Antibody