



Datasheet for ABIN7258080 anti-GBX2 antibody



[Go to Product page](#)

1 Image

Overview

| | |
|--------------|-------------------------------------|
| Quantity: | 200 µL |
| Target: | GBX2 |
| Reactivity: | Human, Rat, Mouse |
| Host: | Rabbit |
| Clonality: | Polyclonal |
| Conjugate: | This GBX2 antibody is un-conjugated |
| Application: | Immunofluorescence (IF) |

Product Details

| | |
|------------------|---|
| Immunogen: | Recombinant fusion protein of human GBX2 (NP_001476.2). |
| Isotype: | IgG |
| Characteristics: | Polyclonal Antibody |
| Purification: | Affinity purification |

Target Details

| | |
|-------------------|--|
| Target: | GBX2 |
| Alternative Name: | GBX2 (GBX2 Products) |
| Background: | GBX2 (Gastrulation Brain Homeobox 2) is a Protein Coding gene. Diseases associated with GBX2 include Epileptic Encephalopathy, Early Infantile, 28 and Colon Small Cell Carcinoma. Among its related pathways are Neural Crest Differentiation and Embryonic and Induced Pluripotent Stem Cells and Lineage-specific Markers. Gene Ontology (GO) annotations related |

Target Details

to this gene include DNA-binding transcription factor activity and sequence-specific DNA binding. An important paralog of this gene is GBX1.

Gene ID: 2637

UniProt: [P52951](#)

Pathways: [Dopaminergic Neurogenesis](#)

Application Details

Application Notes: IF 1:50-1:200

Restrictions: For Research Use only

Handling

Format: Liquid

Concentration: 1 mg/mL

Buffer: PBS with 0.02 % sodium azide, 50 % glycerol, pH 7.3

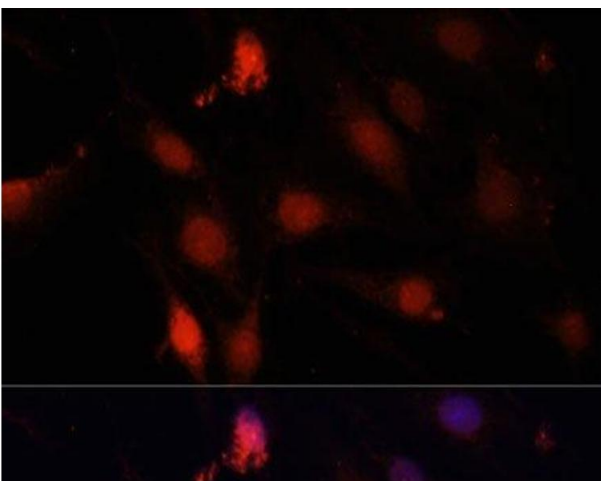
Preservative: Sodium azide

Precaution of Use: This product contains Sodium azide: a POISONOUS AND HAZARDOUS SUBSTANCE which should be handled by trained staff only.

Storage: -20 °C

Storage Comment: Store at -20°C. Avoid freeze / thaw cycles.

Images



Immunofluorescence

Image 1. Immunofluorescence analysis of C6 cells using GBX2 Polyclonal Antibody at dilution of 1:100. Blue: DAPI for nuclear staining.