

Datasheet for ABIN7258082

anti-GPR6 antibody**1** Image[Go to Product page](#)

Overview

Quantity:	200 µL
Target:	GPR6
Reactivity:	Human, Mouse
Host:	Rabbit
Clonality:	Polyclonal
Conjugate:	This GPR6 antibody is un-conjugated
Application:	Western Blotting (WB)

Product Details

Immunogen:	Recombinant fusion protein of human GPR6 (NP_005275.1).
Isotype:	IgG
Characteristics:	Polyclonal Antibody
Purification:	Affinity purification

Target Details

Target:	GPR6
Alternative Name:	GPR6 (GPR6 Products)
Background:	G protein-coupled receptor 6, also known as GPR6, is a protein which in humans is encoded by the GPR6 gene. GPR6 is a member of the G protein-coupled receptor family of transmembrane receptors. It has been reported that GPR6 is both constitutively active but in addition is further activated by sphingosine-1-phosphate. GPR6 up-regulates cyclic AMP levels and promotes

Target Details

	neurite outgrowth.
Molecular Weight:	Observed_MW: 38 kDa Calculated_MW: 37 kDa/39 kDa
Gene ID:	2830
UniProt:	P46095

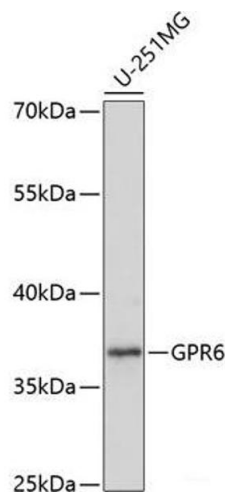
Application Details

Application Notes:	WB 1:500-1:2000
Restrictions:	For Research Use only

Handling

Format:	Liquid
Concentration:	1 mg/mL
Buffer:	PBS with 0.02 % sodium azide, 50 % glycerol, pH 7.3
Preservative:	Sodium azide
Precaution of Use:	This product contains Sodium azide: a POISONOUS AND HAZARDOUS SUBSTANCE which should be handled by trained staff only.
Storage:	-20 °C
Storage Comment:	Store at -20°C. Avoid freeze / thaw cycles.

Images



Western Blotting

Image 1. Western blot analysis of extracts of U-251MG cells using GPR6 Polyclonal Antibody at dilution of 1:1000.