

Datasheet for ABIN7258124

anti-RPE antibody[Go to Product page](#)**1** Image

Overview

Quantity:	200 µL
Target:	RPE
Reactivity:	Human, Mouse, Rat
Host:	Rabbit
Clonality:	Polyclonal
Conjugate:	This RPE antibody is un-conjugated
Application:	Immunofluorescence (IF)

Product Details

Immunogen:	Recombinant fusion protein of human RPE (NP_954699.1).
Isotype:	IgG
Characteristics:	Polyclonal Antibody
Purification:	Affinity purification

Target Details

Target:	RPE
Alternative Name:	RPE (RPE Products)
Background:	RPE (Ribulose-5-Phosphate-3-Epimerase) is a Protein Coding gene. Diseases associated with RPE include Cardiomyopathy, Familial Restrictive, 2. Among its related pathways are Pentose phosphate pathway and Metabolism. Gene Ontology (GO) annotations related to this gene include protein homodimerization activity and racemase and epimerase activity, acting on

Target Details

carbohydrates and derivatives. An important paralog of this gene is RPEL1.

Gene ID: 6120

UniProt: [Q96AT9](#)

Application Details

Application Notes: IF 1:50-1:100

Restrictions: For Research Use only

Handling

Format: Liquid

Concentration: 1 mg/mL

Buffer: PBS with 0.02 % sodium azide, 50 % glycerol, pH 7.3

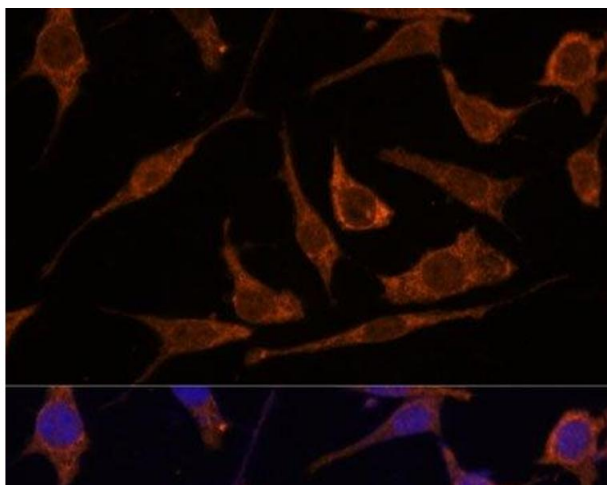
Preservative: Sodium azide

Precaution of Use: This product contains Sodium azide: a POISONOUS AND HAZARDOUS SUBSTANCE which should be handled by trained staff only.

Storage: -20 °C

Storage Comment: Store at -20°C. Avoid freeze / thaw cycles.

Images



Immunofluorescence

Image 1. Immunofluorescence analysis of L929 cells using RPE Polyclonal Antibody at dilution of 1:100 (40x lens). Blue: DAPI for nuclear staining.