



[Go to Product page](#)

Datasheet for ABIN7258132

## anti-TAL2 antibody

### 1 Image

#### Overview

Quantity:	200 µL
Target:	TAL2
Reactivity:	Rat
Host:	Rabbit
Clonality:	Polyclonal
Conjugate:	This TAL2 antibody is un-conjugated
Application:	Western Blotting (WB)

#### Product Details

Immunogen:	A synthetic peptide of human TAL2 (NP_005412.1).
Isotype:	IgG
Characteristics:	Polyclonal Antibody
Purification:	Affinity purification

#### Target Details

Target:	TAL2
Alternative Name:	TAL2 ( <a href="#">TAL2 Products</a> )
Background:	This intronless gene encodes a helix-loop-helix protein. Translocations between this gene on chromosome 9 and the T-cell receptor beta-chain locus on chromosome 7 have been associated with activation of the T-cell acute lymphocytic leukemia 2 gene and T-cell acute lymphoblastic leukemia.

## Target Details

Molecular Weight: Observed\_MW: 12 kDa  
Calculated\_MW: 12 kDa

Gene ID: 6887

UniProt: [Q16559](#)

## Application Details

Application Notes: WB 1:500-1:2000

Restrictions: For Research Use only

## Handling

Format: Liquid

Concentration: 1 mg/mL

Buffer: PBS with 0.02 % sodium azide, 50 % glycerol, pH 7.3

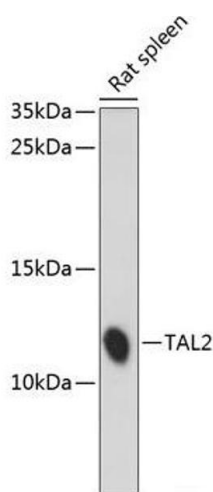
Preservative: Sodium azide

Precaution of Use: This product contains Sodium azide: a POISONOUS AND HAZARDOUS SUBSTANCE which should be handled by trained staff only.

Storage: -20 °C

Storage Comment: Store at -20°C. Avoid freeze / thaw cycles.

## Images



### Western Blotting

**Image 1.** Western blot analysis of extracts of Rat spleen using TAL2 Polyclonal Antibody at dilution of 1:1000.