

Datasheet for ABIN7258162

**anti-TLK1 antibody**

3 Images

[Go to Product page](#)

## Overview

|              |                                     |
|--------------|-------------------------------------|
| Quantity:    | 200 µL                              |
| Target:      | TLK1                                |
| Reactivity:  | Human, Mouse, Rat                   |
| Host:        | Rabbit                              |
| Clonality:   | Polyclonal                          |
| Conjugate:   | This TLK1 antibody is un-conjugated |
| Application: | Immunohistochemistry (IHC)          |

## Product Details

|                  |   |
|------------------|---|
| Immunogen:       | Recombinant fusion protein of human TLK1 (NP_036422.3). |
| Isotype:         | IgG   |
| Characteristics: | Polyclonal Antibody                                     |
| Purification:    | Affinity purification                                   |

## Target Details

|                   |   |
|-------------------|---|
| Target:           | TLK1  |
| Alternative Name: | TLK1 ( <a href="#">TLK1 Products</a> )  |
| Background:       | The protein encoded by this gene is a serine/threonine kinase that may be involved in the regulation of chromatin assembly. The encoded protein is only active when it is phosphorylated, and this phosphorylation is cell cycle-dependent, with the maximal activity of this protein coming during S phase. The catalytic activity of this protein is diminished by DNA damage and |

## Target Details

by blockage of DNA replication. Three transcript variants encoding different isoforms have been found for this gene.

Gene ID: 9874

UniProt: [Q9UKI8](#)

## Application Details

Application Notes: IHC 1:50-1:100

Restrictions: For Research Use only

## Handling

Format: Liquid

Concentration: 1 mg/mL

Buffer: PBS with 0.02 % sodium azide, 50 % glycerol, pH 7.3

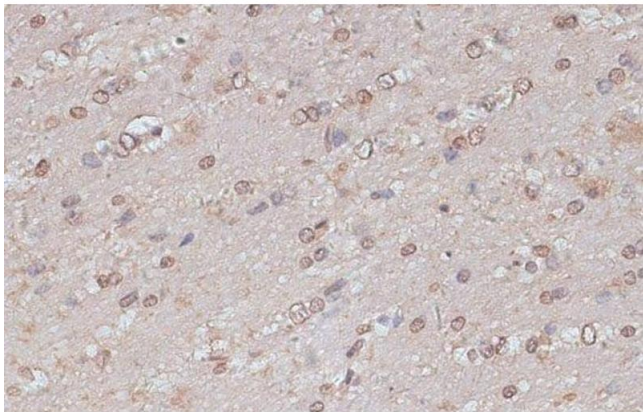
Preservative: Sodium azide

Precaution of Use: This product contains Sodium azide: a POISONOUS AND HAZARDOUS SUBSTANCE which should be handled by trained staff only.

Storage: -20 °C

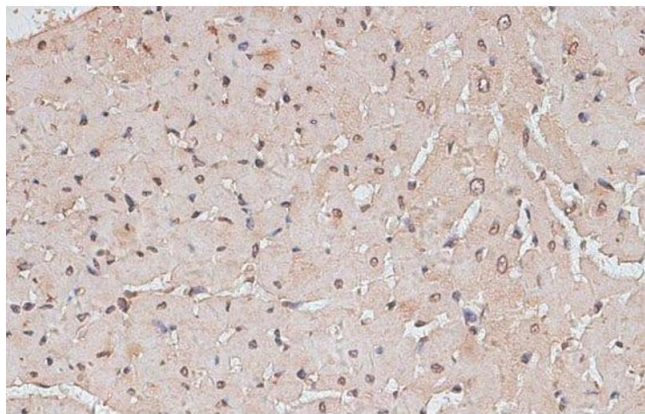
Storage Comment: Store at -20°C. Avoid freeze / thaw cycles.

## Images



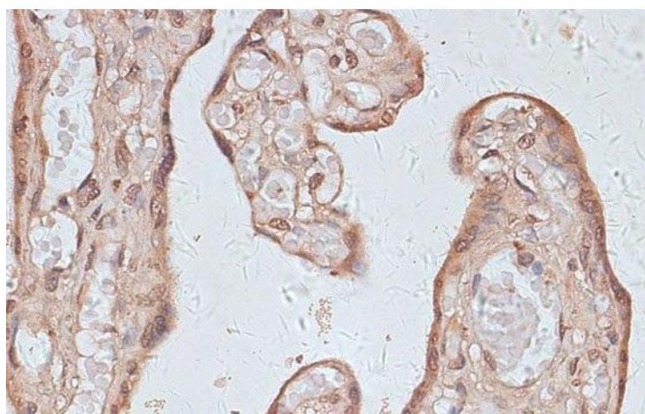
### Immunohistochemistry (Paraffin-embedded Sections)

**Image 1.** Immunohistochemistry of paraffin-embedded Mouse brain using TLK1 Polyclonal Antibody at dilution of 1:100 (40x lens).



#### Immunohistochemistry (Paraffin-embedded Sections)

**Image 2.** Immunohistochemistry of paraffin-embedded Rat heart using TLK1 Polyclonal Antibody at dilution of 1:100 (40x lens).



#### Immunohistochemistry (Paraffin-embedded Sections)

**Image 3.** Immunohistochemistry of paraffin-embedded Human placenta using TLK1 Polyclonal Antibody at dilution of 1:100 (40x lens).