

Datasheet for ABIN7258164
anti-SH2D3A antibody



[Go to Product page](#)

1 Image

Overview

Quantity:	200 µL
Target:	SH2D3A
Reactivity:	Human
Host:	Rabbit
Clonality:	Polyclonal
Conjugate:	This SH2D3A antibody is un-conjugated
Application:	Western Blotting (WB)

Product Details

Immunogen:	Recombinant fusion protein of human SH2D3A (NP_005481.2).
Isotype:	IgG
Characteristics:	Polyclonal Antibody
Purification:	Affinity purification

Target Details

Target:	SH2D3A
Alternative Name:	SH2D3A (SH2D3A Products)
Background:	SH2D3A (SH2 Domain Containing 3A) is a Protein Coding gene. Diseases associated with SH2D3A include Severe Acute Respiratory Syndrome and Eastern Equine Encephalitis. Gene Ontology (GO) annotations related to this gene include guanyl-nucleotide exchange factor activity and SH3/SH2 adaptor activity. An important paralog of this gene is BCAR3.

Target Details

Molecular Weight:	Observed_MW: 63 kDa
	Calculated_MW: 52 kDa/63 kDa
Gene ID:	10045
UniProt:	Q9BRG2

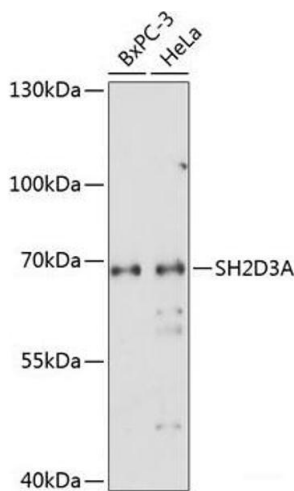
Application Details

Application Notes:	WB 1:500-1:2000
Restrictions:	For Research Use only

Handling

Format:	Liquid
Concentration:	1 mg/mL
Buffer:	PBS with 0.02 % sodium azide, 50 % glycerol, pH 7.3
Preservative:	Sodium azide
Precaution of Use:	This product contains Sodium azide: a POISONOUS AND HAZARDOUS SUBSTANCE which should be handled by trained staff only.
Storage:	-20 °C
Storage Comment:	Store at -20°C. Avoid freeze / thaw cycles.

Images



Western Blotting

Image 1. Western blot analysis of extracts of various cell lines using SH2D3A Polyclonal Antibody at dilution of 1:1000.