

Datasheet for ABIN7258188

anti-DKK2 antibody[Go to Product page](#)**1** Image

Overview

Quantity:	200 µL
Target:	DKK2
Reactivity:	Human
Host:	Rabbit
Clonality:	Polyclonal
Conjugate:	This DKK2 antibody is un-conjugated
Application:	Western Blotting (WB)

Product Details

Immunogen:	A synthetic peptide of human DKK2 (NP_055236.1).
Isotype:	IgG
Characteristics:	Polyclonal Antibody
Purification:	Affinity purification

Target Details

Target:	DKK2
Alternative Name:	DKK2 (DKK2 Products)
Background:	This gene encodes a protein that is a member of the dickkopf family. The secreted protein contains two cysteine rich regions and is involved in embryonic development through its interactions with the Wnt signaling pathway. It can act as either an agonist or antagonist of Wnt/beta-catenin signaling, depending on the cellular context and the presence of the co-factor

Target Details

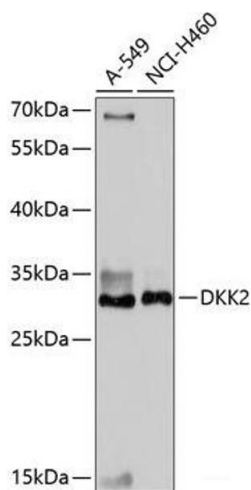
	kremen 2. Activity of this protein is also modulated by binding to the Wnt co-receptor LDL-receptor related protein 6 (LRP6).
Molecular Weight:	Observed_MW: 30 kDa Calculated_MW: 28 kDa
Gene ID:	27123
UniProt:	Q9UBU2
Pathways:	WNT Signaling

Application Details

Application Notes:	WB 1:500-1:2000
Restrictions:	For Research Use only

Handling

Format:	Liquid
Concentration:	1 mg/mL
Buffer:	PBS with 0.02 % sodium azide, 50 % glycerol, pH 7.3
Preservative:	Sodium azide
Precaution of Use:	This product contains Sodium azide: a POISONOUS AND HAZARDOUS SUBSTANCE which should be handled by trained staff only.
Storage:	-20 °C
Storage Comment:	Store at -20°C. Avoid freeze / thaw cycles.



Western Blotting

Image 1. Western blot analysis of extracts of various cell lines using DKK2 Polyclonal Antibody at dilution of 1:1000.