



Datasheet for ABIN7258190 anti-RPS6KA6 antibody



[Go to Product page](#)

1 Image

Overview

Quantity:	200 µL
Target:	RPS6KA6
Reactivity:	Mouse
Host:	Rabbit
Clonality:	Polyclonal
Conjugate:	This RPS6KA6 antibody is un-conjugated
Application:	Western Blotting (WB)

Product Details

Immunogen:	Recombinant fusion protein of human RPS6KA6 (NP_055311.1).
Isotype:	IgG
Characteristics:	Polyclonal Antibody
Purification:	Affinity purification

Target Details

Target:	RPS6KA6
Alternative Name:	RPS6KA6 (RPS6KA6 Products)
Background:	This gene encodes a member of ribosomal S6 kinase family, serine-threonine protein kinases which are regulated by growth factors. The encoded protein may be distinct from other members of this family, however, as studies suggest it is not growth factor dependent and may not participate in the same signaling pathways.

Target Details

Molecular Weight:	Observed_MW: 84 kDa Calculated_MW: 83 kDa/84 kDa
Gene ID:	27330
UniProt:	Q9UK32
Pathways:	MAPK Signaling

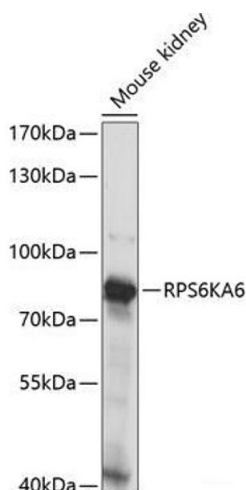
Application Details

Application Notes:	WB 1:500-1:2000
Restrictions:	For Research Use only

Handling

Format:	Liquid
Concentration:	1 mg/mL
Buffer:	PBS with 0.02 % sodium azide, 50 % glycerol, pH 7.3
Preservative:	Sodium azide
Precaution of Use:	This product contains Sodium azide: a POISONOUS AND HAZARDOUS SUBSTANCE which should be handled by trained staff only.
Storage:	-20 °C
Storage Comment:	Store at -20°C. Avoid freeze / thaw cycles.

Images



Western Blotting

Image 1. Western blot analysis of extracts of Mouse kidney using RPS6KA6 Polyclonal Antibody at dilution of 1:1000.