



[Go to Product page](#)

Datasheet for ABIN7258198

## anti-CHRAC1 antibody

### 1 Image

#### Overview

Quantity:	200 µL
Target:	CHRAC1
Reactivity:	Human, Mouse, Rat
Host:	Rabbit
Clonality:	Polyclonal
Conjugate:	This CHRAC1 antibody is un-conjugated
Application:	Western Blotting (WB)

#### Product Details

Immunogen:	Recombinant fusion protein of human CHRAC1 (NP_059140.1).
Isotype:	IgG
Specificity:	This antibody ist KO validated.
Characteristics:	Polyclonal Antibody
Purification:	Affinity purification
Grade:	KO Validated

#### Target Details

Target:	CHRAC1
Alternative Name:	CHRAC1 ( <a href="#">CHRAC1 Products</a> )
Background:	CHRAC1 is a histone-fold protein that interacts with other histone-fold proteins to bind DNA in a

## Target Details

---

sequence-independent manner. These histone-fold protein dimers combine within larger enzymatic complexes for DNA transcription, replication, and packaging.

Molecular Weight: Observed\_MW: 14 kDa  
Calculated\_MW: 14 kDa

Gene ID: 54108

UniProt: [Q9NRG0](#)

## Application Details

---

Application Notes: WB 1:500-1:2000

Restrictions: For Research Use only

## Handling

---

Format: Liquid

Concentration: 1 mg/mL

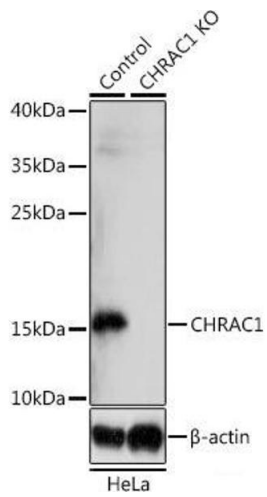
Buffer: PBS with 0.02 % sodium azide, 50 % glycerol, pH 7.3

Preservative: Sodium azide

Precaution of Use: This product contains Sodium azide: a POISONOUS AND HAZARDOUS SUBSTANCE which should be handled by trained staff only.

Storage: -20 °C

Storage Comment: Store at -20°C. Avoid freeze / thaw cycles.



### Western Blotting

**Image 1.** Western blot analysis of extracts from normal (control) and CHRAC1 knockout (KO) HeLa cells using CHRAC1 Polyclonal Antibody at dilution of 1:1000.