



## Datasheet for ABIN7258210 anti-KLHL8 antibody



[Go to Product page](#)

### 3 Images

#### Overview

Quantity:	200 µL
Target:	KLHL8
Reactivity:	Human, Rat, Mouse
Host:	Rabbit
Clonality:	Polyclonal
Conjugate:	This KLHL8 antibody is un-conjugated
Application:	Immunofluorescence (IF)

#### Product Details

Immunogen:	Recombinant fusion protein of human KLHL8 (NP_065854.3).
Isotype:	IgG
Characteristics:	Polyclonal Antibody
Purification:	Affinity purification

#### Target Details

Target:	KLHL8
Alternative Name:	KLHL8 ( <a href="#">KLHL8 Products</a> )
Background:	KLHL8 (Kelch Like Family Member 8) is a Protein Coding gene. Diseases associated with KLHL8 include Verrucous Papilloma and Enamel Caries. An important paralog of this gene is KLHL20.

## Target Details

Gene ID: 57563

UniProt: [Q9P2G9](#)

## Application Details

Application Notes: IF 1:50-1:200

Restrictions: For Research Use only

## Handling

Format: Liquid

Concentration: 1 mg/mL

Buffer: PBS with 0.02 % sodium azide, 50 % glycerol, pH 7.3

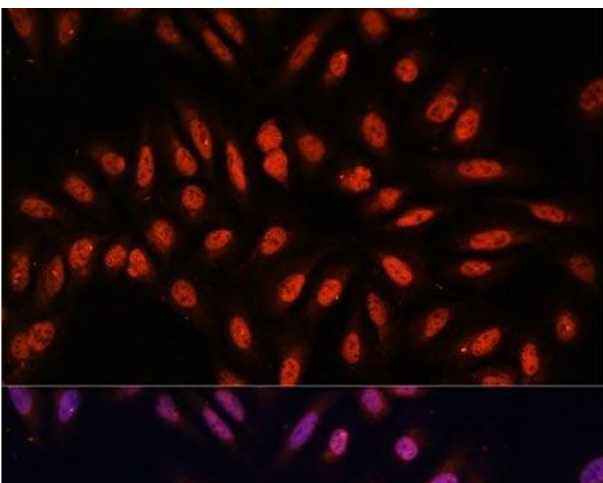
Preservative: Sodium azide

Precaution of Use: This product contains Sodium azide: a POISONOUS AND HAZARDOUS SUBSTANCE which should be handled by trained staff only.

Storage: -20 °C

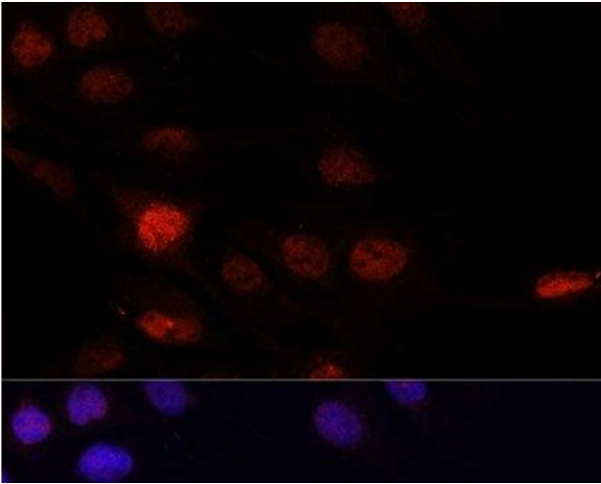
Storage Comment: Store at -20°C. Avoid freeze / thaw cycles.

## Images



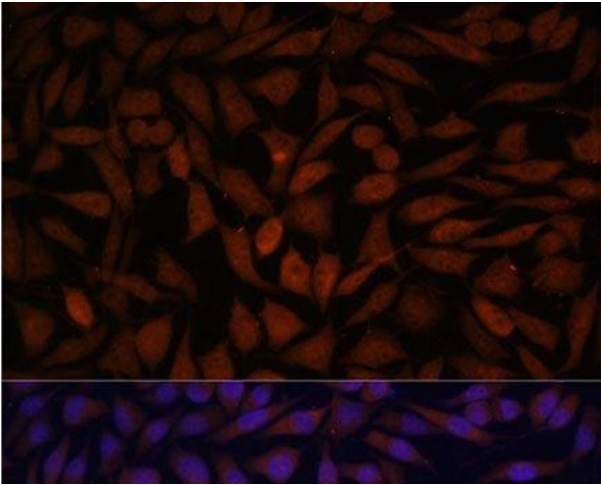
### Immunofluorescence

**Image 1.** Immunofluorescence analysis of U-2 OS cells using KLHL8 Polyclonal Antibody at dilution of 1:100. Blue: DAPI for nuclear staining.



#### Immunofluorescence

**Image 2.** Immunofluorescence analysis of C6 cells using KLHL8 Polyclonal Antibody at dilution of 1:100. Blue: DAPI for nuclear staining.



#### Immunofluorescence

**Image 3.** Immunofluorescence analysis of L929 cells using KLHL8 Polyclonal Antibody at dilution of 1:100. Blue: DAPI for nuclear staining.