



[Go to Product page](#)

Datasheet for ABIN7258230
anti-LDHAL6B antibody

2 Images

Overview

Quantity:	200 µL
Target:	LDHAL6B
Reactivity:	Rat, Mouse
Host:	Rabbit
Clonality:	Polyclonal
Conjugate:	This LDHAL6B antibody is un-conjugated
Application:	Western Blotting (WB), Immunofluorescence (IF)

Product Details

Immunogen:	Recombinant fusion protein of human LDHAL6B (NP_149972.1).
Isotype:	IgG
Characteristics:	Polyclonal Antibody
Purification:	Affinity purification

Target Details

Target:	LDHAL6B
Alternative Name:	LDHAL6B (LDHAL6B Products)
Background:	LDHAL6B belongs to the LDH/MDH superfamily. LDH family. The specific function of the protein remains unknown.
Molecular Weight:	Observed_MW: 42 kDa

Target Details

Calculated_MW: 41 kDa

Gene ID: 92483

UniProt: [Q9BYZ2](#)

Application Details

Application Notes: WB 1:500-1:2000 IF 1:50-1:200

Restrictions: For Research Use only

Handling

Format: Liquid

Concentration: 1 mg/mL

Buffer: PBS with 0.02 % sodium azide, 50 % glycerol, pH 7.3

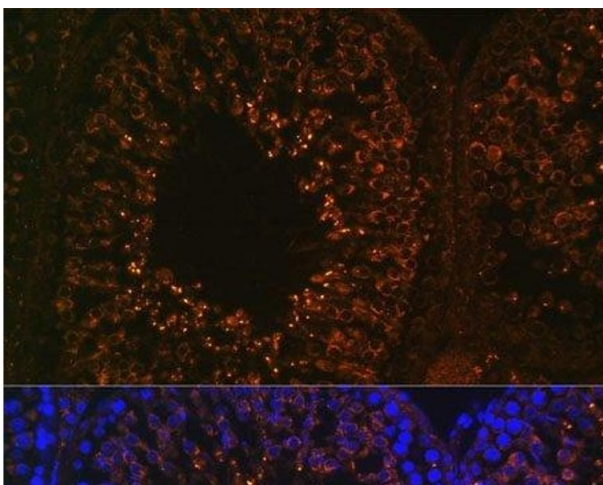
Preservative: Sodium azide

Precaution of Use: This product contains Sodium azide: a POISONOUS AND HAZARDOUS SUBSTANCE which should be handled by trained staff only.

Storage: -20 °C

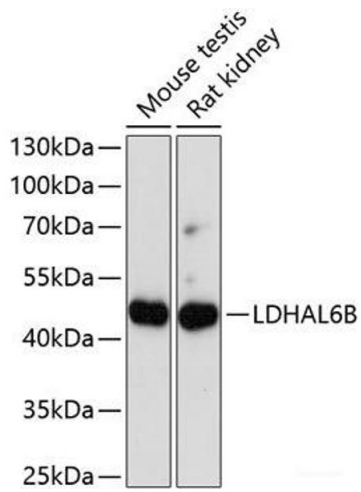
Storage Comment: Store at -20°C. Avoid freeze / thaw cycles.

Images



Immunofluorescence

Image 1. Immunofluorescence analysis of Rat testis using LDHAL6B Polyclonal Antibody at dilution of 1:100. Blue: DAPI for nuclear staining.



Western Blotting

Image 2. Western blot analysis of extracts of various cell lines using LDHAL6B Polyclonal Antibody at dilution of 1:1000.