



Datasheet for ABIN7258232 anti-GLB1L3 antibody



[Go to Product page](#)

1 Image

Overview

Quantity:	200 µL
Target:	GLB1L3
Reactivity:	Human, Mouse, Rat
Host:	Rabbit
Clonality:	Polyclonal
Conjugate:	This GLB1L3 antibody is un-conjugated
Application:	Immunohistochemistry (IHC)

Product Details

Immunogen:	Recombinant fusion protein of human GLB1L3 (NP_001073876.2).
Isotype:	IgG
Characteristics:	Polyclonal Antibody
Purification:	Affinity purification

Target Details

Target:	GLB1L3
Alternative Name:	GLB1L3 (GLB1L3 Products)
Background:	GLB1L3 (Galactosidase Beta 1 Like 3) is a Protein Coding gene. Diseases associated with GLB1L3 include Mucopolysaccharidosis, Type Ivb and Gm1 Gangliosidosis. Gene Ontology (GO) annotations related to this gene include hydrolase activity, hydrolyzing O-glycosyl compounds and beta-galactosidase activity. An important paralog of this gene is GLB1L2.

Target Details

Gene ID: 112937

UniProt: [Q8NCI6](#)

Application Details

Application Notes: IHC 1:50-1:200

Restrictions: For Research Use only

Handling

Format: Liquid

Concentration: 1 mg/mL

Buffer: PBS with 0.02 % sodium azide, 50 % glycerol, pH 7.3

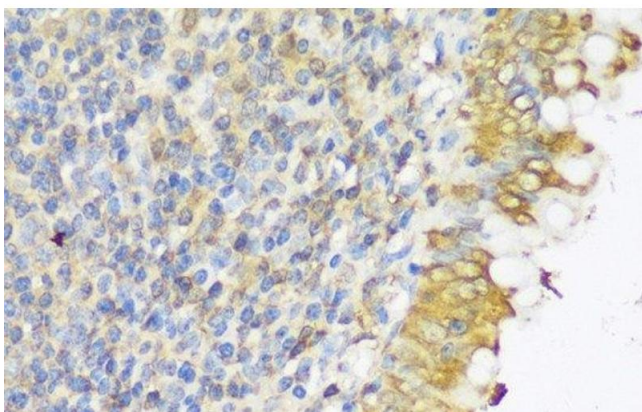
Preservative: Sodium azide

Precaution of Use: This product contains Sodium azide: a POISONOUS AND HAZARDOUS SUBSTANCE which should be handled by trained staff only.

Storage: -20 °C

Storage Comment: Store at -20°C. Avoid freeze / thaw cycles.

Images



Immunohistochemistry (Paraffin-embedded Sections)

Image 1. Immunohistochemistry of paraffin-embedded Human appendix using GLB1L3 Polyclonal Antibody at dilution of 1:150 (40x lens).