



## Datasheet for ABIN7258234 anti-PKD1L2 antibody



[Go to Product page](#)

### 1 Image

#### Overview

Quantity:	200 µL
Target:	PKD1L2
Reactivity:	Mouse
Host:	Rabbit
Clonality:	Polyclonal
Conjugate:	This PKD1L2 antibody is un-conjugated
Application:	Western Blotting (WB)

#### Product Details

Immunogen:	Recombinant fusion protein of human PKD1L2 (NP_001265352.1).
Isotype:	IgG
Characteristics:	Polyclonal Antibody
Purification:	Affinity purification

#### Target Details

Target:	PKD1L2
Alternative Name:	PKD1L2 ( <a href="#">PKD1L2 Products</a> )
Background:	This gene encodes a member of the polycystin protein family. The encoded protein contains 11 transmembrane domains, a latrophilin/CL-1-like GPCR proteolytic site (GPS) domain, and a polycystin-1, lipoxygenase, alpha-toxin (PLAT) domain. This protein may function as a component of cation channel pores. This gene appears to be a polymorphic pseudogene in

## Target Details

---

humans, where some individuals contain a non-functional allele. Alternative splicing results in multiple transcript variants.

Molecular Weight: Observed\_MW: 33 kDa  
Calculated\_MW: 26 kDa/32 kDa/107 kDa/197 kDa/272 kDa

Gene ID: 114780

UniProt: [Q7Z442](#)

## Application Details

---

Application Notes: WB 1:500-1:2000

Restrictions: For Research Use only

## Handling

---

Format: Liquid

Concentration: 1 mg/mL

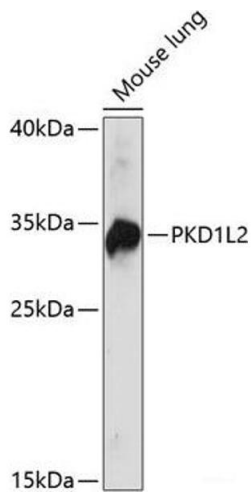
Buffer: PBS with 0.02 % sodium azide, 50 % glycerol, pH 7.3

Preservative: Sodium azide

Precaution of Use: This product contains Sodium azide: a POISONOUS AND HAZARDOUS SUBSTANCE which should be handled by trained staff only.

Storage: -20 °C

Storage Comment: Store at -20°C. Avoid freeze / thaw cycles.



### Western Blotting

**Image 1.** Western blot analysis of extracts of Mouse lung using PKD1L2 Polyclonal Antibody at dilution of 1:1000.