

Datasheet for ABIN7258266

anti-BMP10 antibody[Go to Product page](#)**1** Image

Overview

Quantity:	200 µL
Target:	BMP10
Reactivity:	Rat
Host:	Rabbit
Clonality:	Polyclonal
Conjugate:	This BMP10 antibody is un-conjugated
Application:	Western Blotting (WB)

Product Details

Immunogen:	Recombinant fusion protein of human BMP10 (NP_055297.1).
Isotype:	IgG
Characteristics:	Polyclonal Antibody
Purification:	Affinity purification

Target Details

Target:	BMP10
Alternative Name:	BMP10 (BMP10 Products)
Background:	The protein encoded by this gene is a member of the TGF-beta family of growth factors. Data suggest that the similar protein in mouse plays an important role in trabeculation of the embryonic heart. In human, this protein may signal through receptor serine/threonine kinases.

Target Details

Molecular Weight:	Observed_MW: 48 kDa
	Calculated_MW: 48 kDa
Gene ID:	27302
UniProt:	O95393
Pathways:	Hormone Activity , Regulation of Muscle Cell Differentiation

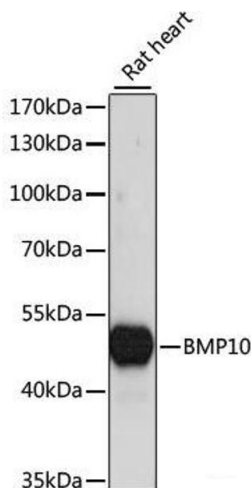
Application Details

Application Notes:	WB 1:500-1:2000
Restrictions:	For Research Use only

Handling

Format:	Liquid
Concentration:	1 mg/mL
Buffer:	PBS with 0.02 % sodium azide, 50 % glycerol, pH 7.3
Preservative:	Sodium azide
Precaution of Use:	This product contains Sodium azide: a POISONOUS AND HAZARDOUS SUBSTANCE which should be handled by trained staff only.
Storage:	-20 °C
Storage Comment:	Store at -20°C. Avoid freeze / thaw cycles.

Images



Western Blotting

Image 1. Western blot analysis of extracts of Rat heart using BMP10 Polyclonal Antibody at dilution of 1:1000.