

Datasheet for ABIN7258292
anti-SLC25A6 antibody[Go to Product page](#)

1 Image

Overview

Quantity:	200 µL
Target:	SLC25A6
Reactivity:	Human
Host:	Rabbit
Clonality:	Polyclonal
Conjugate:	This SLC25A6 antibody is un-conjugated
Application:	Immunofluorescence (IF)

Product Details

Immunogen:	Recombinant fusion protein of human SLC25A6 (NP_001627.2).
Isotype:	IgG
Characteristics:	Polyclonal Antibody
Purification:	Affinity purification

Target Details

Target:	SLC25A6
Alternative Name:	SLC25A6 (SLC25A6 Products)
Background:	<p>This gene is a member of the mitochondrial carrier subfamily of solute carrier protein genes.</p> <p>The product of this gene functions as a gated pore that translocates ADP from the cytoplasm into the mitochondrial matrix and ATP from the mitochondrial matrix into the cytoplasm. The protein is implicated in the function of the permeability transition pore complex (PTPC), which</p>

Target Details

regulates the release of mitochondrial products that induce apoptosis. The human genome contains several non-transcribed pseudogenes of this gene.

Gene ID: 293

UniProt: [P12236](#)

Application Details

Application Notes: IF 1:50-1:200

Restrictions: For Research Use only

Handling

Format: Liquid

Concentration: 1 mg/mL

Buffer: PBS with 0.02 % sodium azide, 50 % glycerol, pH 7.3

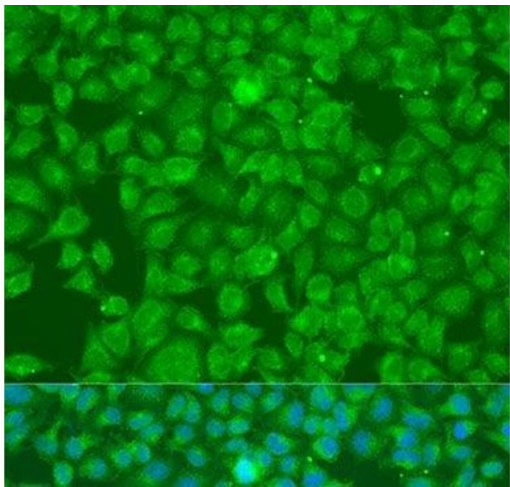
Preservative: Sodium azide

Precaution of Use: This product contains Sodium azide: a POISONOUS AND HAZARDOUS SUBSTANCE which should be handled by trained staff only.

Storage: -20 °C

Storage Comment: Store at -20°C. Avoid freeze / thaw cycles.

Images



Immunofluorescence

Image 1. Immunofluorescence analysis of U2OS cells using SLC25A6 Polyclonal Antibody at dilution of 1:100. Blue: DAPI for nuclear staining.