

Datasheet for ABIN7258304

anti-CHD1 antibody

1 Image



[Go to Product page](#)

Overview

Quantity:	200 µL
Target:	CHD1
Reactivity:	Human
Host:	Rabbit
Clonality:	Polyclonal
Conjugate:	This CHD1 antibody is un-conjugated
Application:	Immunofluorescence (IF)

Product Details

Immunogen:	Recombinant fusion protein of human CHD1 (NP_001261.2).
Isotype:	IgG
Characteristics:	Polyclonal Antibody
Purification:	Affinity purification

Target Details

Target:	CHD1
Alternative Name:	CHD1 (CHD1 Products)
Background:	The CHD family of proteins is characterized by the presence of chromo (chromatin organization modifier) domains and SNF2-related helicase/ATPase domains. CHD genes alter gene expression possibly by modification of chromatin structure thus altering access of the transcriptional apparatus to its chromosomal DNA template.

Target Details

Gene ID:	1105
UniProt:	O14646
Pathways:	Chromatin Binding

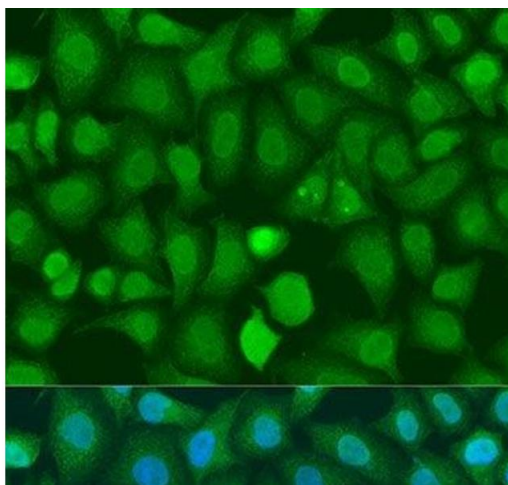
Application Details

Application Notes:	IF 1:50-1:200
Restrictions:	For Research Use only

Handling

Format:	Liquid
Concentration:	1 mg/mL
Buffer:	PBS with 0.02 % sodium azide, 50 % glycerol, pH 7.3
Preservative:	Sodium azide
Precaution of Use:	This product contains Sodium azide: a POISONOUS AND HAZARDOUS SUBSTANCE which should be handled by trained staff only.
Storage:	-20 °C
Storage Comment:	Store at -20°C. Avoid freeze / thaw cycles.

Images



Immunofluorescence

Image 1. Immunofluorescence analysis of U2OS cells using CHD1 Polyclonal Antibody at dilution of 1:100. Blue: DAPI for nuclear staining.