

Datasheet for ABIN7258310
anti-Leukotriene B4 Receptor/BLT antibody[Go to Product page](#)

1 Image

Overview

Quantity:	200 µL
Target:	Leukotriene B4 Receptor/BLT (LTB4R)
Reactivity:	Mouse
Host:	Rabbit
Clonality:	Polyclonal
Conjugate:	This Leukotriene B4 Receptor/BLT antibody is un-conjugated
Application:	Western Blotting (WB)

Product Details

Immunogen:	A synthetic peptide of human LTB4R (NP_858043.1).
Isotype:	IgG
Characteristics:	Polyclonal Antibody
Purification:	Affinity purification

Target Details

Target:	Leukotriene B4 Receptor/BLT (LTB4R)
Alternative Name:	LTB4R (LTB4R Products)
Background:	LTB4R (Leukotriene B4 Receptor) is a Protein Coding gene. Diseases associated with LTB4R include Cicatricial Entropion and Spastic Entropion. Among its related pathways are RET signaling and Signaling by GPCR. Gene Ontology (GO) annotations related to this gene include G protein-coupled receptor activity and leukotriene receptor activity. An important paralog of

Target Details

	this gene is LTB4R2.
Molecular Weight:	Observed_MW: 37 kDa Calculated_MW: 37 kDa
Gene ID:	1241
UniProt:	Q15722

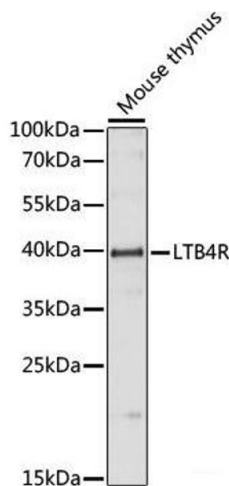
Application Details

Application Notes:	WB 1:500-1:2000
Restrictions:	For Research Use only

Handling

Format:	Liquid
Concentration:	1 mg/mL
Buffer:	PBS with 0.02 % sodium azide, 50 % glycerol, pH 7.3
Preservative:	Sodium azide
Precaution of Use:	This product contains Sodium azide: a POISONOUS AND HAZARDOUS SUBSTANCE which should be handled by trained staff only.
Storage:	-20 °C
Storage Comment:	Store at -20°C. Avoid freeze / thaw cycles.

Images



Western Blotting

Image 1. Western blot analysis of extracts of Mouse thymus using LTB4R Polyclonal Antibody at dilution of 1:1000.