

Datasheet for ABIN7258368

anti-SIM2 antibody[Go to Product page](#)**1** Image

Overview

Quantity:	200 µL
Target:	SIM2
Reactivity:	Human
Host:	Rabbit
Clonality:	Polyclonal
Conjugate:	This SIM2 antibody is un-conjugated
Application:	Western Blotting (WB)

Product Details

Immunogen:	Recombinant fusion protein of human SIM2 (NP_033664.2).
Isotype:	IgG
Characteristics:	Polyclonal Antibody
Purification:	Affinity purification

Target Details

Target:	SIM2
Alternative Name:	SIM2 (SIM2 Products)
Background:	This gene represents a homolog of the Drosophila single-minded (sim) gene, which encodes a transcription factor that is a master regulator of neurogenesis. The encoded protein is ubiquitinated by RING-IBR-RING-type E3 ubiquitin ligases, including the parkin RBR E3 ubiquitin protein ligase. This gene maps within the so-called Down syndrome chromosomal region, and

Target Details

is thus thought to contribute to some specific Down syndrome phenotypes. Alternative splicing of this gene results in multiple transcript variants.

Molecular Weight: Observed_MW: 56 kDa
Calculated_MW: 63 kDa/73 kDa

Gene ID: 6493

UniProt: [Q14190](#)

Application Details

Application Notes: WB 1:500-1:2000

Restrictions: For Research Use only

Handling

Format: Liquid

Concentration: 1 mg/mL

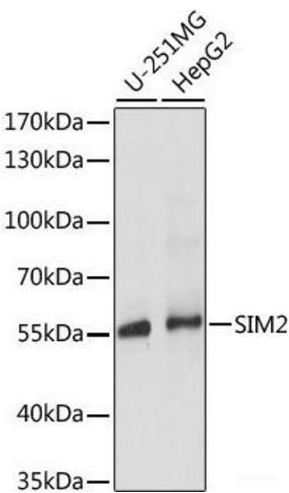
Buffer: PBS with 0.02 % sodium azide, 50 % glycerol, pH 7.3

Preservative: Sodium azide

Precaution of Use: This product contains Sodium azide: a POISONOUS AND HAZARDOUS SUBSTANCE which should be handled by trained staff only.

Storage: -20 °C

Storage Comment: Store at -20°C. Avoid freeze / thaw cycles.



Western Blotting

Image 1. Western blot analysis of extracts of various cell lines using SIM2 Polyclonal Antibody at dilution of 1:1000.