

Datasheet for ABIN7258406  
**anti-Sec23 Homolog B antibody**

## 3 Images

[Go to Product page](#)

## Overview

Quantity:	200 µL
Target:	Sec23 Homolog B (SEC23B)
Reactivity:	Human, Mouse, Rat
Host:	Rabbit
Clonality:	Polyclonal
Conjugate:	This Sec23 Homolog B antibody is un-conjugated
Application:	Immunofluorescence (IF)

## Product Details

Immunogen:	A synthetic peptide of human SEC23B (NP_006354.2).
Isotype:	IgG
Characteristics:	Polyclonal Antibody
Purification:	Affinity purification

## Target Details

Target:	Sec23 Homolog B (SEC23B)
Alternative Name:	SEC23B ( <a href="#">SEC23B Products</a> )
Background:	The protein encoded by this gene is a member of the SEC23 subfamily of the SEC23/SEC24 family, which is involved in vesicle trafficking. The encoded protein has similarity to yeast Sec23p component of COPII. COPII is the coat protein complex responsible for vesicle budding from the ER. The function of this gene product has been implicated in cargo selection and

## Target Details

concentration. Multiple alternatively spliced transcript variants have been identified in this gene.

Gene ID: 10483

UniProt: [Q15437](#)

## Application Details

Application Notes: IF 1:50-1:200

Restrictions: For Research Use only

## Handling

Format: Liquid

Concentration: 1 mg/mL

Buffer: PBS with 0.02 % sodium azide, 50 % glycerol, pH 7.3

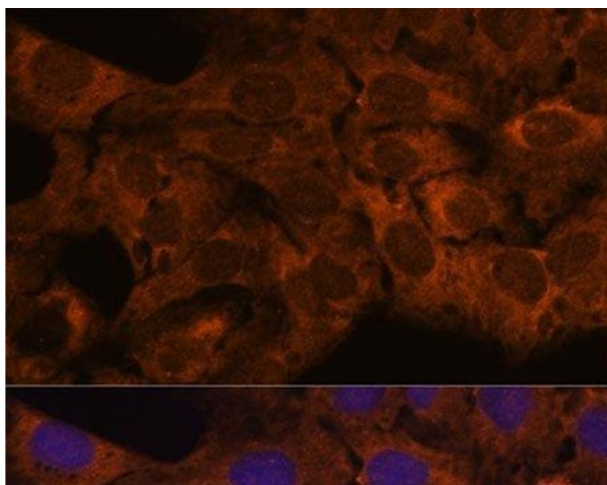
Preservative: Sodium azide

Precaution of Use: This product contains Sodium azide: a POISONOUS AND HAZARDOUS SUBSTANCE which should be handled by trained staff only.

Storage: -20 °C

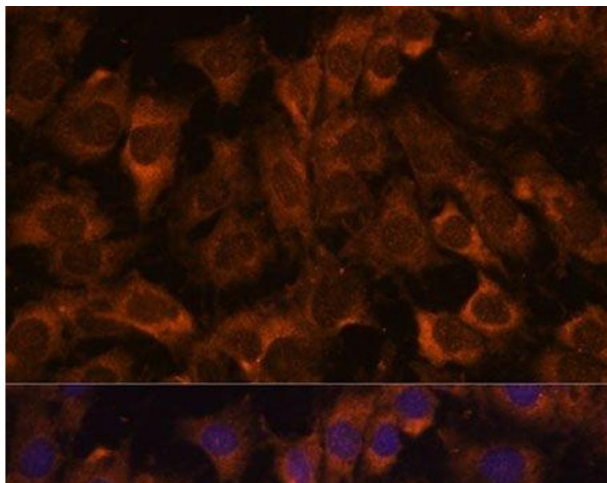
Storage Comment: Store at -20°C. Avoid freeze / thaw cycles.

## Images



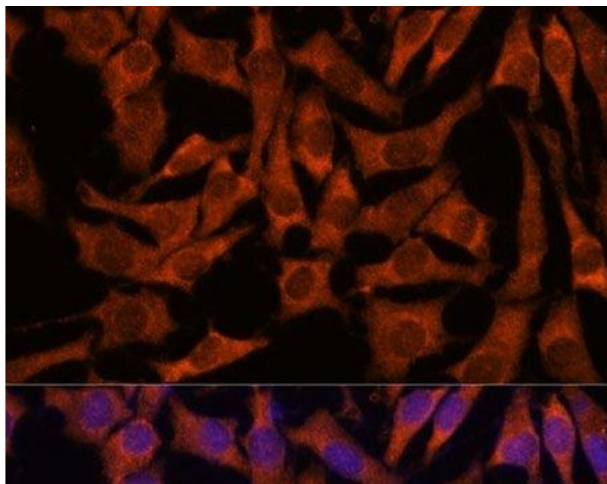
### Immunofluorescence

**Image 1.** Immunofluorescence analysis of U-2 OS cells using SEC23B Polyclonal Antibody at dilution of 1:100. Blue: DAPI for nuclear staining.



#### Immunofluorescence

**Image 2.** Immunofluorescence analysis of C6 cells using SEC23B Polyclonal Antibody at dilution of 1:100. Blue: DAPI for nuclear staining.



#### Immunofluorescence

**Image 3.** Immunofluorescence analysis of L929 cells using SEC23B Polyclonal Antibody at dilution of 1:100. Blue: DAPI for nuclear staining.