

Datasheet for ABIN7258410

anti-MAP3K2 antibody[Go to Product page](#)**1** Image

Overview

Quantity:	200 µL
Target:	MAP3K2
Reactivity:	Mouse
Host:	Rabbit
Clonality:	Polyclonal
Conjugate:	This MAP3K2 antibody is un-conjugated
Application:	Western Blotting (WB)

Product Details

Immunogen:	Recombinant fusion protein of human MAP3K2 (NP_006600.3).
Isotype:	IgG
Characteristics:	Polyclonal Antibody
Purification:	Affinity purification

Target Details

Target:	MAP3K2
Alternative Name:	MAP3K2 (MAP3K2 Products)
Background:	The protein encoded by this gene is a member of serine/threonine protein kinase family. This kinase preferentially activates other kinases involved in the MAP kinase signaling pathway. This kinase has been shown to directly phosphorylate and activate Iκappa B kinases, and thus plays a role in NF-kappa B signaling pathway. This kinase has also been found to bind and activate

Target Details

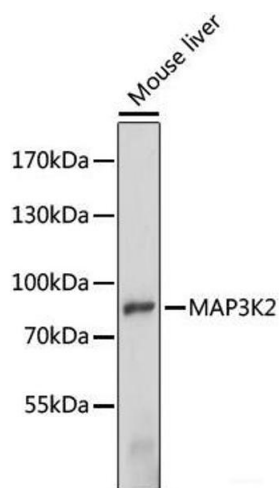
	protein kinase C-related kinase 2, which suggests its involvement in a regulated signaling process.
Molecular Weight:	Observed_MW: 80 kDa Calculated_MW: 69 kDa
Gene ID:	10746
UniProt:	Q9Y2U5
Pathways:	MAPK Signaling

Application Details

Application Notes:	WB 1:500-1:2000
Restrictions:	For Research Use only

Handling

Format:	Liquid
Concentration:	1 mg/mL
Buffer:	PBS with 0.02 % sodium azide, 50 % glycerol, pH 7.3
Preservative:	Sodium azide
Precaution of Use:	This product contains Sodium azide: a POISONOUS AND HAZARDOUS SUBSTANCE which should be handled by trained staff only.
Storage:	-20 °C
Storage Comment:	Store at -20°C. Avoid freeze / thaw cycles.



Western Blotting

Image 1. Western blot analysis of extracts of Mouse liver using MAP3K2 Polyclonal Antibody at dilution of 1:1000.