

Datasheet for ABIN7258426  
**anti-Claudin 17 antibody**

## 2 Images

[Go to Product page](#)

## Overview

Quantity:	200 µL
Target:	Claudin 17 (CLDN17)
Reactivity:	Mouse, Rat
Host:	Rabbit
Clonality:	Polyclonal
Conjugate:	This Claudin 17 antibody is un-conjugated
Application:	Western Blotting (WB), Immunohistochemistry (IHC)

## Product Details

Immunogen:	A synthetic peptide of human CLDN17 (NP_036263.1).
Isotype:	IgG
Characteristics:	Polyclonal Antibody
Purification:	Affinity purification

## Target Details

Target:	Claudin 17 (CLDN17)
Alternative Name:	CLDN17 ( <a href="#">CLDN17 Products</a> )
Background:	This gene encodes a member of the claudin family. Claudins are integral membrane proteins and components of tight junction strands. Tight junction strands serve as a physical barrier to prevent solutes and water from passing freely through the paracellular space between epithelial or endothelial cell sheets, and also play critical roles in maintaining cell polarity and signal

## Target Details

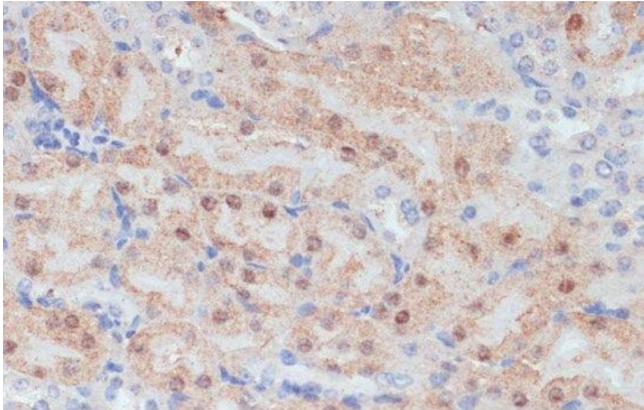
	transductions. This gene is intronless and is clustered with CLDN8 on chromosome 21q22.11.
Molecular Weight:	Observed_MW: 29 kDa Calculated_MW: 24 kDa
Gene ID:	26285
UniProt:	<a href="#">P56750</a>
Pathways:	<a href="#">Cell-Cell Junction Organization</a> , <a href="#">Hepatitis C</a>

## Application Details

Application Notes:	WB 1:500-1:2000 IHC 1:50-1:100
Restrictions:	For Research Use only

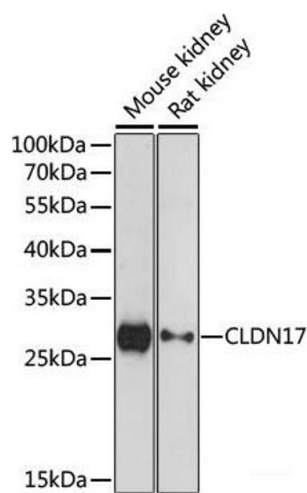
## Handling

Format:	Liquid
Concentration:	1 mg/mL
Buffer:	PBS with 0.02 % sodium azide, 50 % glycerol, pH 7.3
Preservative:	Sodium azide
Precaution of Use:	This product contains Sodium azide: a POISONOUS AND HAZARDOUS SUBSTANCE which should be handled by trained staff only.
Storage:	-20 °C
Storage Comment:	Store at -20°C. Avoid freeze / thaw cycles.



**Immunohistochemistry (Paraffin-embedded Sections)**

**Image 1.** Immunohistochemistry of paraffin-embedded Mouse kidney using CLDN17 Polyclonal Antibody at dilution of 1:100 (40x lens).



**Western Blotting**

**Image 2.** Western blot analysis of extracts of various cell lines using CLDN17 Polyclonal Antibody at dilution of 1:1000.