

Datasheet for ABIN7258448

anti-RBM25 antibody[Go to Product page](#)**1** Image

Overview

Quantity:	200 µL
Target:	RBM25
Reactivity:	Mouse, Human
Host:	Rabbit
Clonality:	Polyclonal
Conjugate:	This RBM25 antibody is un-conjugated
Application:	Immunofluorescence (IF)

Product Details

Immunogen:	Recombinant fusion protein of human RBM25 (NP_067062.1).
Isotype:	IgG
Characteristics:	Polyclonal Antibody
Purification:	Affinity purification

Target Details

Target:	RBM25
Alternative Name:	RBM25 (RBM25 Products)
Background:	RBM25 (RNA Binding Motif Protein 25) is a Protein Coding gene. Diseases associated with RBM25 include Atrial Septal Defect 9. Among its related pathways are mRNA Splicing - Major Pathway. Gene Ontology (GO) annotations related to this gene include nucleic acid binding and nucleotide binding.

Target Details

Gene ID: 58517

UniProt: [P49756](#)

Application Details

Application Notes: IF 1:50-1:200

Restrictions: For Research Use only

Handling

Format: Liquid

Concentration: 1 mg/mL

Buffer: PBS with 0.02 % sodium azide, 50 % glycerol, pH 7.3

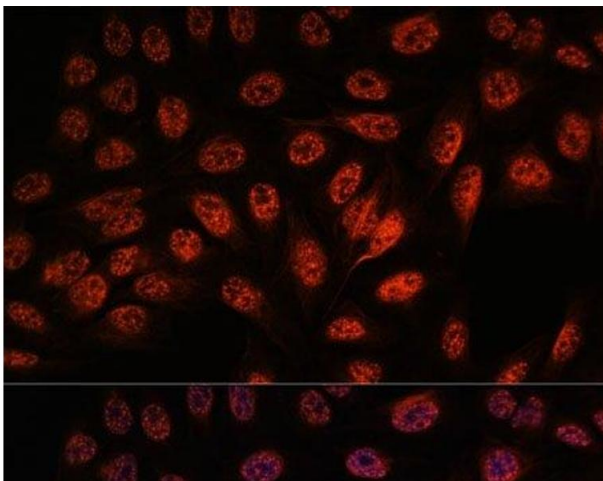
Preservative: Sodium azide

Precaution of Use: This product contains Sodium azide: a POISONOUS AND HAZARDOUS SUBSTANCE which should be handled by trained staff only.

Storage: -20 °C

Storage Comment: Store at -20°C. Avoid freeze / thaw cycles.

Images



Immunofluorescence

Image 1. Immunofluorescence analysis of U-2 OS cells using RBM25 Polyclonal Antibody at dilution of 1:100. Blue: DAPI for nuclear staining.