

Datasheet for ABIN7258458

anti-CEP63 antibody[Go to Product page](#)**1** Image

Overview

Quantity:	200 µL
Target:	CEP63
Reactivity:	Human, Mouse, Rat
Host:	Rabbit
Clonality:	Polyclonal
Conjugate:	This CEP63 antibody is un-conjugated
Application:	Western Blotting (WB)

Product Details

Immunogen:	Recombinant fusion protein of human CEP63 (NP_001035859.1).
Isotype:	IgG
Characteristics:	Polyclonal Antibody
Purification:	Affinity purification

Target Details

Target:	CEP63
Alternative Name:	CEP63 (CEP63 Products)
Background:	This gene encodes a protein with six coiled-coil domains. The protein is localized to the centrosome, a non-membraneous organelle that functions as the major microtubule-organizing center in animal cells. Several alternatively spliced transcript variants have been found, but their biological validity has not been determined.

Target Details

Molecular Weight:	Observed_MW: 73 kDa
	Calculated_MW: 55 kDa/57 kDa/63 kDa/81 kDa
Gene ID:	80254
UniProt:	Q96MT8
Pathways:	M Phase

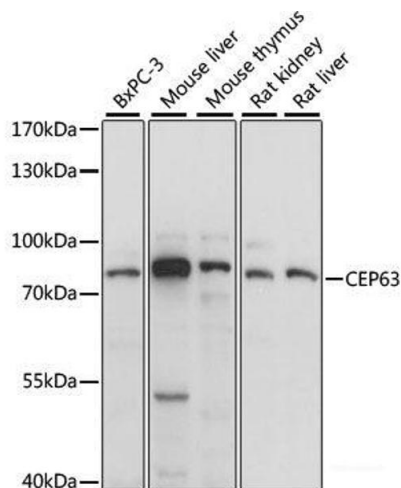
Application Details

Application Notes:	WB 1:200-1:2000
Restrictions:	For Research Use only

Handling

Format:	Liquid
Concentration:	1 mg/mL
Buffer:	PBS with 0.02 % sodium azide, 50 % glycerol, pH 7.3
Preservative:	Sodium azide
Precaution of Use:	This product contains Sodium azide: a POISONOUS AND HAZARDOUS SUBSTANCE which should be handled by trained staff only.
Storage:	-20 °C
Storage Comment:	Store at -20°C. Avoid freeze / thaw cycles.

Images



Western Blotting

Image 1. Western blot analysis of extracts of various cell lines using CEP63 Polyclonal Antibody at dilution of 1:1000.