

Datasheet for ABIN7258462
anti-Retbindin antibody[Go to Product page](#)

1 Image

Overview

Quantity:	200 µL
Target:	Retbindin (RTBDN)
Reactivity:	Rat
Host:	Rabbit
Clonality:	Polyclonal
Conjugate:	This Retbindin antibody is un-conjugated
Application:	Western Blotting (WB)

Product Details

Immunogen:	Recombinant fusion protein of human RTBDN (NP_113617.1).
Isotype:	IgG
Characteristics:	Polyclonal Antibody
Purification:	Affinity purification

Target Details

Target:	Retbindin (RTBDN)
Alternative Name:	RTBDN (RTBDN Products)
Background:	This gene was first identified in a study of human eye tissues. The protein encoded by this gene is preferentially expressed in the retina and may play a role in binding retinoids and other carotenoids as it shares homology with riboflavin binding proteins. Alternative splicing results in multiple transcript variants and protein isoforms.

Target Details

Molecular Weight:	Observed_MW: 25 kDa
	Calculated_MW: 24 kDa/25 kDa/28 kDa
Gene ID:	83546
UniProt:	Q9BSG5

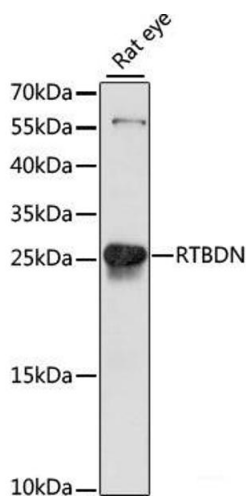
Application Details

Application Notes:	WB 1:200-1:2000
Restrictions:	For Research Use only

Handling

Format:	Liquid
Concentration:	1 mg/mL
Buffer:	PBS with 0.02 % sodium azide, 50 % glycerol, pH 7.3
Preservative:	Sodium azide
Precaution of Use:	This product contains Sodium azide: a POISONOUS AND HAZARDOUS SUBSTANCE which should be handled by trained staff only.
Storage:	-20 °C
Storage Comment:	Store at -20°C. Avoid freeze / thaw cycles.

Images



Western Blotting

Image 1. Western blot analysis of extracts of Rat eye using RTBDN Polyclonal Antibody at dilution of 1:1000.