

Datasheet for ABIN7258482

anti-DRD3 antibody

5 Images

[Go to Product page](#)

Overview

Quantity:	200 µL
Target:	DRD3
Reactivity:	Human, Rat, Mouse
Host:	Rabbit
Clonality:	Polyclonal
Conjugate:	This DRD3 antibody is un-conjugated
Application:	Western Blotting (WB), Immunohistochemistry (IHC), Immunofluorescence (IF)

Product Details

Immunogen:	Recombinant fusion protein of human DRD3 (NP_000787.2).
Isotype:	IgG
Characteristics:	Polyclonal Antibody
Purification:	Affinity purification

Target Details

Target:	DRD3
Alternative Name:	DRD3 (DRD3 Products)
Background:	This gene encodes the D3 subtype of the five (D1-D5) dopamine receptors. The activity of the D3 subtype receptor is mediated by G proteins which inhibit adenylyl cyclase. This receptor is localized to the limbic areas of the brain, which are associated with cognitive, emotional, and endocrine functions. Genetic variation in this gene may be associated with susceptibility to

Target Details

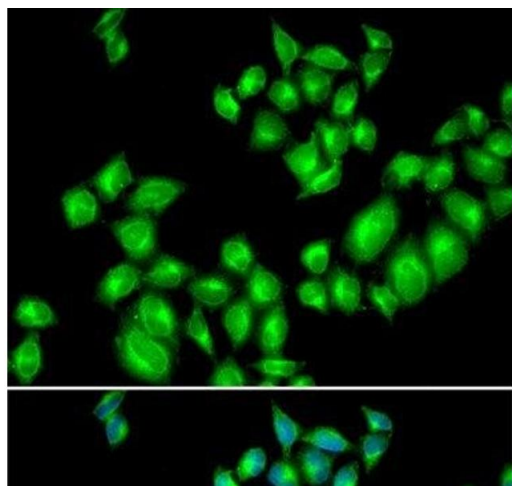
	hereditary essential tremor 1. Alternative splicing of this gene results in transcript variants encoding different isoforms, although some variants may be subject to nonsense-mediated decay (NMD).
Molecular Weight:	Observed_MW: 44 kDa Calculated_MW: 40 kDa/44 kDa
Gene ID:	1814
UniProt:	P35462
Pathways:	Regulation of Systemic Arterial Blood Pressure by Hormones , cAMP Metabolic Process , Regulation of G-Protein Coupled Receptor Protein Signaling , Proton Transport , Negative Regulation of Transporter Activity

Application Details

Application Notes:	WB 1:500-1:2000 IHC 1:50-1:200 IF 1:50-1:200
Restrictions:	For Research Use only

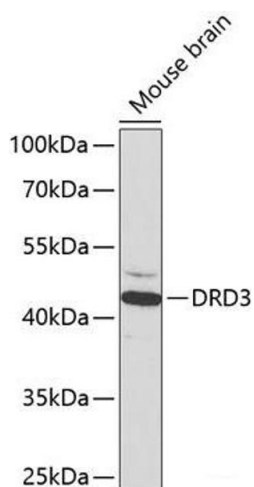
Handling

Format:	Liquid
Concentration:	1 mg/mL
Buffer:	PBS with 0.02 % sodium azide, 50 % glycerol, pH 7.3
Preservative:	Sodium azide
Precaution of Use:	This product contains Sodium azide: a POISONOUS AND HAZARDOUS SUBSTANCE which should be handled by trained staff only.
Storage:	-20 °C
Storage Comment:	Store at -20°C. Avoid freeze / thaw cycles.



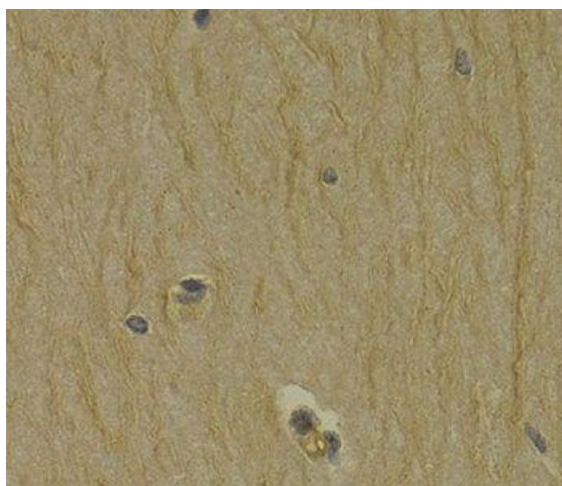
Immunofluorescence

Image 1. Immunofluorescence analysis of U2OS cells using DRD3 Polyclonal Antibody



Western Blotting

Image 2. Western blot analysis of extracts of Mouse brain using DRD3 Polyclonal Antibody at dilution of 1:1000.



Immunohistochemistry (Paraffin-embedded Sections)

Image 3. Immunohistochemistry of paraffin-embedded Rat brain using DRD3 Polyclonal Antibody at dilution of 1:200 (40x lens).

Please check the [product details page](#) for more images. Overall 5 images are available for ABIN7258482.