



Datasheet for ABIN7258526  
**anti-Histone H2B antibody (acLys15)**



[Go to Product page](#)

8 Images

Overview

Quantity:	200 µL
Target:	Histone H2B
Binding Specificity:	acLys15
Reactivity:	Human, Mouse, Rat
Host:	Rabbit
Clonality:	Polyclonal
Conjugate:	This Histone H2B antibody is un-conjugated
Application:	Western Blotting (WB), Immunohistochemistry (IHC), Immunofluorescence (IF)

Product Details

Immunogen:	A synthetic acetylated peptide corresponding to residues surrounding K15 of human Histone H2B
Isotype:	IgG
Characteristics:	Acetylated antibody
Purification:	Affinity purification

Target Details

Target:	Histone H2B
Abstract:	<a href="#">Histone H2B Products</a>
Molecular Weight:	15 kDa

## Target Details

UniProt: [Q16778](#)

## Application Details

Application Notes: WB 1:500-1:2000 IHC 1:50-1:200 IF 1:50-1:100

Restrictions: For Research Use only

## Handling

Format: Liquid

Concentration: 1 mg/mL

Buffer: PBS with 0.02 % sodium azide, 50 % glycerol, pH 7.3

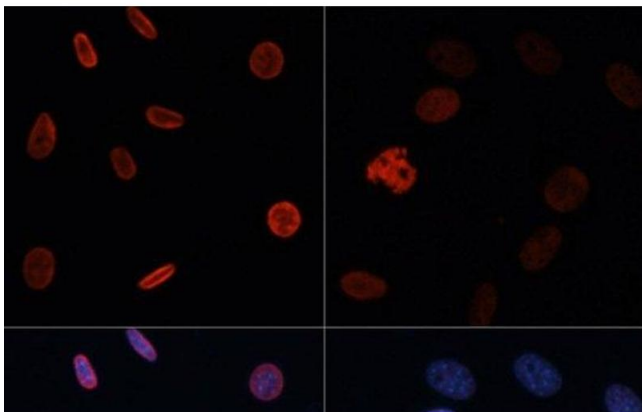
Preservative: Sodium azide

Precaution of Use: This product contains Sodium azide: a POISONOUS AND HAZARDOUS SUBSTANCE which should be handled by trained staff only.

Storage: -20 °C

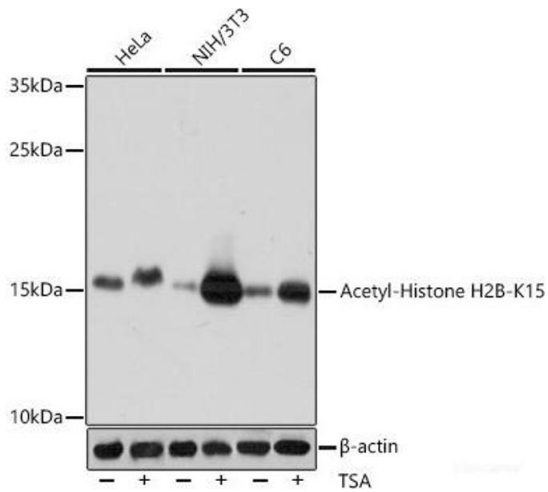
Storage Comment: Store at -20°C. Avoid freeze / thaw cycles.

## Images



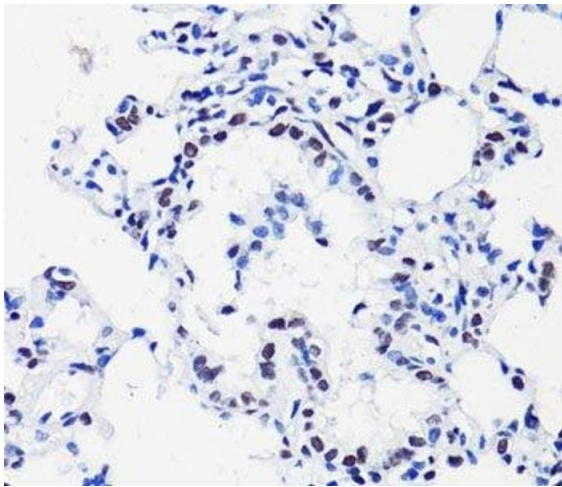
### Immunofluorescence

**Image 1.** Immunofluorescence analysis of NIH/3T3 cells using Acetyl-Histone H2B-K15 Polyclonal Antibody at dilution of 1:100. NIH/3T3 cells were treated by TSA (1  $\mu$ M) at 37 °C for 18 hours. Blue: DAPI for nuclear staining.



### Western Blotting

**Image 2.** Western blot analysis of extracts of various cell lines using Acetyl-Histone H2B-K15 Polyclonal Antibody at dilution of 1:1000. HeLa cells were treated by TSA (1 uM) at 37 °C for 18 hours. NIH/3T3 cells were treated by TSA (1 uM) at 37 °C for 18 hours. C6 cells were treated by TSA (1 uM) at 37 °C for 18 hours.



### Immunohistochemistry (Paraffin-embedded Sections)

**Image 3.** Immunohistochemistry of paraffin-embedded Rat lung using Acetyl-Histone H2B-K15 Polyclonal Antibody at dilution of 1:100 (40x lens).

Please check the [product details page](#) for more images. Overall 8 images are available for ABIN7258526.