



## Datasheet for ABIN7258530 anti-IMPDH2 antibody



[Go to Product page](#)

### 1 Image

#### Overview

Quantity:	200 µL
Target:	IMPDH2
Reactivity:	Human, Mouse, Rat
Host:	Rabbit
Clonality:	Polyclonal
Conjugate:	This IMPDH2 antibody is un-conjugated
Application:	Western Blotting (WB)

#### Product Details

Immunogen:	Recombinant fusion protein of human IMPDH2 (NP_000875.2).
Isotype:	IgG
Characteristics:	Polyclonal Antibody
Purification:	Affinity purification

#### Target Details

Target:	IMPDH2
Alternative Name:	IMPDH2 ( <a href="#">IMPDH2 Products</a> )
Background:	This gene encodes the rate-limiting enzyme in the de novo guanine nucleotide biosynthesis. It is thus involved in maintaining cellular guanine deoxy- and ribonucleotide pools needed for DNA and RNA synthesis. The encoded protein catalyzes the NAD-dependent oxidation of inosine-5'-monophosphate into xanthine-5'-monophosphate, which is then converted into guanosine-5'-

## Target Details

---

monophosphate. This gene is up-regulated in some neoplasms, suggesting it may play a role in malignant transformation.

Molecular Weight: Observed\_MW: 56 kDa  
Calculated\_MW: 55 kDa

Gene ID: 3615

UniProt: [P12268](#)

Pathways: [Ribonucleoside Biosynthetic Process, SARS-CoV-2 Protein Interactome](#)

## Application Details

---

Application Notes: WB 1:500-1:2000

Restrictions: For Research Use only

## Handling

---

Format: Liquid

Concentration: 1 mg/mL

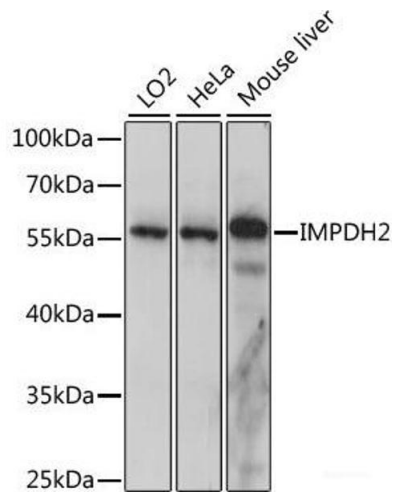
Buffer: PBS with 0.02 % sodium azide, 50 % glycerol, pH 7.3

Preservative: Sodium azide

Precaution of Use: This product contains Sodium azide: a POISONOUS AND HAZARDOUS SUBSTANCE which should be handled by trained staff only.

Storage: -20 °C

Storage Comment: Store at -20°C. Avoid freeze / thaw cycles.



### Western Blotting

**Image 1.** Western blot analysis of extracts of various cell lines using IMPDH2 Polyclonal Antibody at dilution of 1:1000.