

Datasheet for ABIN7258558  
**anti-Cathelicidin antibody**

## 3 Images

[Go to Product page](#)

## Overview

Quantity:	200 µL
Target:	Cathelicidin (CAMP)
Reactivity:	Human, Mouse, Rat
Host:	Rabbit
Clonality:	Polyclonal
Application:	Immunohistochemistry (IHC), Immunofluorescence (IF)

## Product Details

Immunogen:	Recombinant fusion protein of human CAMP (NP_004336.3).
Isotype:	IgG
Characteristics:	Polyclonal Antibody
Purification:	Affinity purification

## Target Details

Target:	Cathelicidin (CAMP)
Alternative Name:	CAMP ( <a href="#">CAMP Products</a> )
Target Type:	Chemical
Background:	This gene encodes a member of an antimicrobial peptide family, characterized by a highly conserved N-terminal signal peptide containing a cathelin domain and a structurally variable cationic antimicrobial peptide, which is produced by extracellular proteolysis from the C-terminus. In addition to its antibacterial, antifungal, and antiviral activities, the encoded protein

## Target Details

functions in cell chemotaxis, immune mediator induction, and inflammatory response regulation.

Gene ID: 820

UniProt: [P49913](#)

Pathways: [Cellular Response to Molecule of Bacterial Origin](#)

## Application Details

Application Notes: IHC 1:50-1:200 IF 1:50-1:200

Restrictions: For Research Use only

## Handling

Format: Liquid

Concentration: 1 mg/mL

Buffer: PBS with 0.02 % sodium azide, 50 % glycerol, pH 7.3

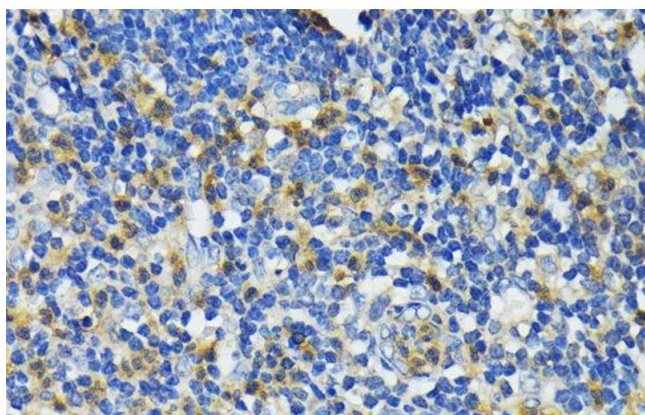
Preservative: Sodium azide

Precaution of Use: This product contains Sodium azide: a POISONOUS AND HAZARDOUS SUBSTANCE which should be handled by trained staff only.

Storage: -20 °C

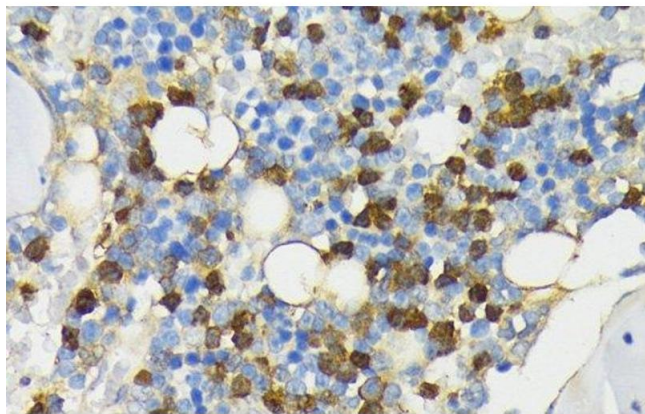
Storage Comment: Store at -20°C. Avoid freeze / thaw cycles.

## Images



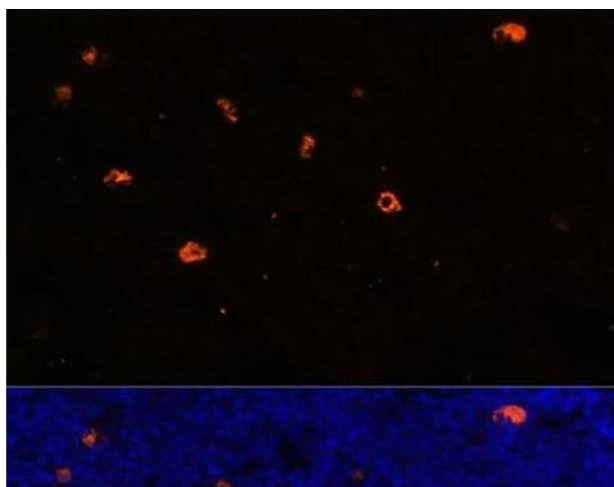
### Immunohistochemistry (Paraffin-embedded Sections)

**Image 1.** Immunohistochemistry of paraffin-embedded Human appendix using CAMP Polyclonal Antibody at dilution of 1:200 (40x lens).



#### Immunohistochemistry (Paraffin-embedded Sections)

**Image 2.** Immunohistochemistry of paraffin-embedded Rat bone marrow using CAMP Polyclonal Antibody at dilution of 1:200 (40x lens).



#### Immunofluorescence

**Image 3.** Immunofluorescence analysis of Rat bone marrow using CAMP Polyclonal Antibody at dilution of 1:100. Blue: DAPI for nuclear staining.