

Datasheet for ABIN7258574

anti-GLRa2 antibody[Go to Product page](#)**1** Image

Overview

Quantity:	200 µL
Target:	GLRa2
Reactivity:	Rat, Human, Mouse
Host:	Rabbit
Clonality:	Polyclonal
Conjugate:	This GLRa2 antibody is un-conjugated
Application:	Western Blotting (WB)

Product Details

Immunogen:	Recombinant fusion protein of human GLRA2 (NP_002054.1).
Isotype:	IgG
Characteristics:	Polyclonal Antibody
Purification:	Affinity purification

Target Details

Target:	GLRa2
Alternative Name:	GLRA2 (GLRa2 Products)
Background:	The glycine receptor consists of two subunits, alpha and beta, and acts as a pentamer. The protein encoded by this gene is an alpha subunit and can bind strychnine. Several transcript variants encoding different isoforms have been found for this gene.

Target Details

Molecular Weight:	Observed_MW: 52 kDa Calculated_MW: 42 kDa/51 kDa/52 kDa
Gene ID:	2742
UniProt:	P23416
Pathways:	Synaptic Membrane

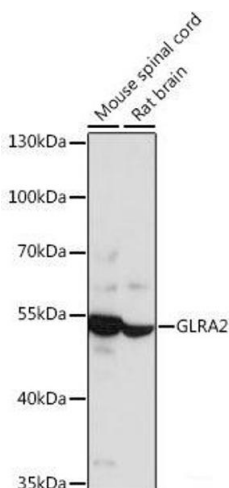
Application Details

Application Notes:	WB 1:500-1:2000
Restrictions:	For Research Use only

Handling

Format:	Liquid
Concentration:	1 mg/mL
Buffer:	PBS with 0.02 % sodium azide, 50 % glycerol, pH 7.3
Preservative:	Sodium azide
Precaution of Use:	This product contains Sodium azide: a POISONOUS AND HAZARDOUS SUBSTANCE which should be handled by trained staff only.
Storage:	-20 °C
Storage Comment:	Store at -20°C. Avoid freeze / thaw cycles.

Images



Western Blotting

Image 1. Western blot analysis of extracts of various cell lines using GLRA2 Polyclonal Antibody at dilution of 1:1000.