



Datasheet for ABIN7258586 anti-KCNS2 antibody



[Go to Product page](#)

4 Images

Overview

Quantity:	200 µL
Target:	KCNS2
Reactivity:	Human, Mouse, Rat
Host:	Rabbit
Clonality:	Polyclonal
Conjugate:	This KCNS2 antibody is un-conjugated
Application:	Western Blotting (WB), Immunofluorescence (IF)

Product Details

Immunogen:	Recombinant fusion protein of human KCNS2 (NP_065748.1).
Isotype:	IgG
Characteristics:	Polyclonal Antibody
Purification:	Affinity purification

Target Details

Target:	KCNS2
Alternative Name:	KCNS2 (KCNS2 Products)
Background:	KCNS2 (Potassium Voltage-Gated Channel Modifier Subfamily S Member 2) is a Protein Coding gene. Diseases associated with KCNS2 include Essential Tremor and Charcot-Marie-Tooth Disease, Recessive Intermediate B. Among its related pathways are Potassium Channels and Transmission across Chemical Synapses. Gene Ontology (GO) annotations related to this gene

Target Details

include ion channel activity and delayed rectifier potassium channel activity. An important paralog of this gene is KCNS3.

Molecular Weight: Observed_MW: 54 kDa
Calculated_MW: 54 kDa

Gene ID: 3788

UniProt: [Q9ULS6](#)

Application Details

Application Notes: WB 1:500-1:2000 IF 1:50-1:100

Restrictions: For Research Use only

Handling

Format: Liquid

Concentration: 1 mg/mL

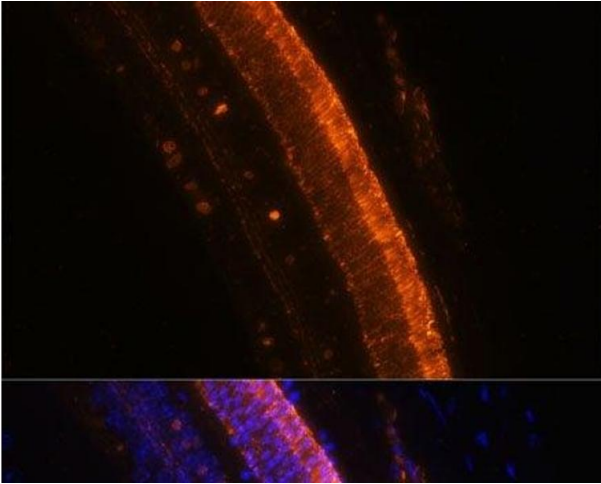
Buffer: PBS with 0.02 % sodium azide, 50 % glycerol, pH 7.3

Preservative: Sodium azide

Precaution of Use: This product contains Sodium azide: a POISONOUS AND HAZARDOUS SUBSTANCE which should be handled by trained staff only.

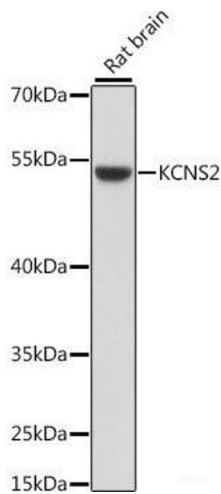
Storage: -20 °C

Storage Comment: Store at -20°C. Avoid freeze / thaw cycles.



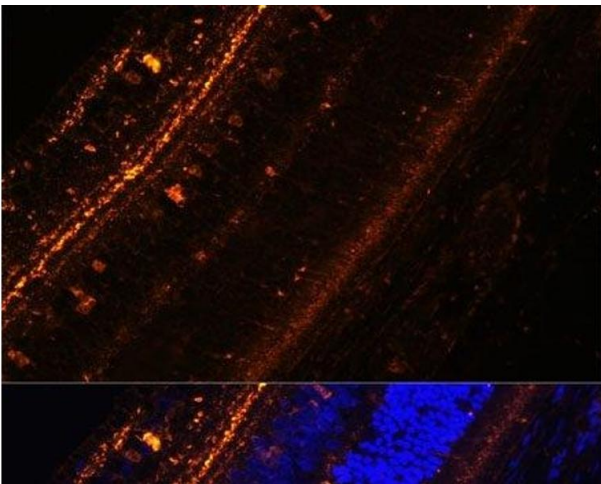
Immunofluorescence

Image 1. Immunofluorescence analysis of Mouse eye using KCNS2 Polyclonal Antibody at dilution of 1:100 (40x lens). Blue: DAPI for nuclear staining.



Western Blotting

Image 2. Western blot analysis of extracts of Rat brain using KCNS2 Polyclonal Antibody at dilution of 1:1000.



Immunofluorescence

Image 3. Immunofluorescence analysis of Rat eye using KCNS2 Polyclonal Antibody at dilution of 1:100 (40x lens). Blue: DAPI for nuclear staining.

Please check the [product details page](#) for more images. Overall 4 images are available for ABIN7258586.