



[Go to Product page](#)

Datasheet for ABIN7258602

anti-Phospholipase C gamma 1 antibody

2 Images

Overview

Quantity:	200 µL
Target:	Phospholipase C gamma 1 (PLCG1)
Reactivity:	Human, Mouse, Rat
Host:	Rabbit
Clonality:	Polyclonal
Conjugate:	This Phospholipase C gamma 1 antibody is un-conjugated
Application:	Western Blotting (WB), Immunofluorescence (IF)

Product Details

Immunogen:	Recombinant fusion protein of human PLCG1 (NP_002651.2).
Isotype:	IgG
Characteristics:	Polyclonal Antibody
Purification:	Affinity purification

Target Details

Target:	Phospholipase C gamma 1 (PLCG1)
Alternative Name:	PLCG1 (PLCG1 Products)
Background:	The protein encoded by this gene catalyzes the formation of inositol 1,4,5-trisphosphate and diacylglycerol from phosphatidylinositol 4,5-bisphosphate. This reaction uses calcium as a cofactor and plays an important role in the intracellular transduction of receptor-mediated tyrosine kinase activators. For example, when activated by SRC, the encoded protein causes the

Target Details

Ras guanine nucleotide exchange factor RasGRP1 to translocate to the Golgi, where it activates Ras. Also, this protein has been shown to be a major substrate for heparin-binding growth factor 1 (acidic fibroblast growth factor)-activated tyrosine kinase. Two transcript variants encoding different isoforms have been found for this gene.

Molecular Weight: Observed_MW: 149 kDa
Calculated_MW: 148 kDa

Gene ID: 5335

UniProt: [P19174](#)

Pathways: [RTK Signaling](#), [WNT Signaling](#), [TCR Signaling](#), [Fc-epsilon Receptor Signaling Pathway](#), [EGFR Signaling Pathway](#), [Neurotrophin Signaling Pathway](#), [Thyroid Hormone Synthesis](#), [Inositol Metabolic Process](#), [Myometrial Relaxation and Contraction](#), [Regulation of Muscle Cell Differentiation](#), [Regulation of G-Protein Coupled Receptor Protein Signaling](#), [Skeletal Muscle Fiber Development](#), [G-protein mediated Events](#), [Signaling Events mediated by VEGFR1 and VEGFR2](#), [Interaction of EGFR with phospholipase C-gamma](#), [VEGFR1 Specific Signals](#), [VEGF Signaling](#)

Application Details

Application Notes: WB 1:500-1:2000 IF 1:50-1:200

Restrictions: For Research Use only

Handling

Format: Liquid

Concentration: 1 mg/mL

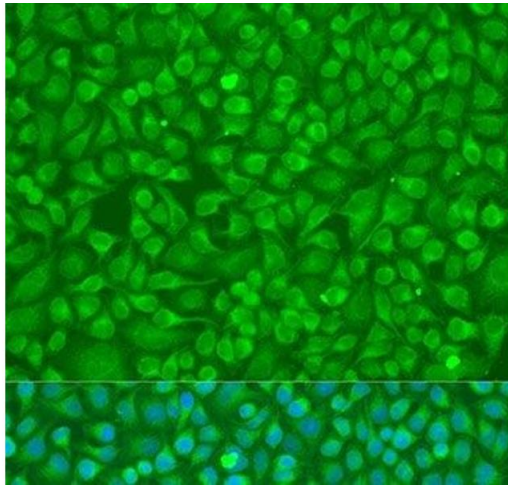
Buffer: PBS with 0.02 % sodium azide, 50 % glycerol, pH 7.3

Preservative: Sodium azide

Precaution of Use: This product contains Sodium azide: a POISONOUS AND HAZARDOUS SUBSTANCE which should be handled by trained staff only.

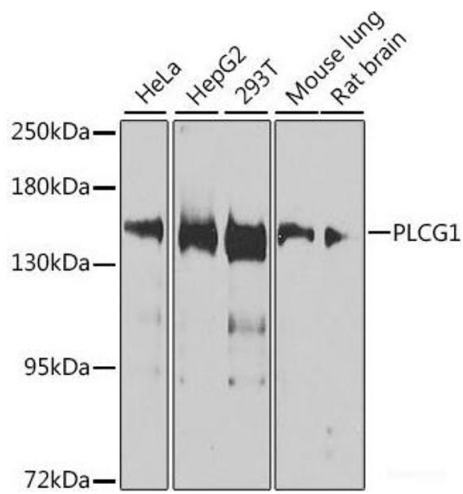
Storage: -20 °C

Storage Comment: Store at -20°C. Avoid freeze / thaw cycles.



Immunofluorescence

Image 1. Immunofluorescence analysis of U2OS cells using PLCG1 Polyclonal Antibody at dilution of 1:100. Blue: DAPI for nuclear staining.



Western Blotting

Image 2. Western blot analysis of extracts of various cell lines using PLCG1 Polyclonal Antibody at dilution of 1:1000.