

Datasheet for ABIN7258614

anti-RPS13 antibody**3** Images[Go to Product page](#)

Overview

Quantity:	200 µL
Target:	RPS13
Reactivity:	Human, Mouse, Rat
Host:	Rabbit
Clonality:	Polyclonal
Conjugate:	This RPS13 antibody is un-conjugated
Application:	Immunohistochemistry (IHC), Immunofluorescence (IF)

Product Details

Immunogen:	Recombinant fusion protein of human RPS13 (NP_001008.1).
Isotype:	IgG
Characteristics:	Polyclonal Antibody
Purification:	Affinity purification

Target Details

Target:	RPS13
Alternative Name:	RPS13 (RPS13 Products)
Background:	Ribosomes, the organelles that catalyze protein synthesis, consist of a small 40S subunit and a large 60S subunit. Together these subunits are composed of 4 RNA species and approximately 80 structurally distinct proteins. This gene encodes a ribosomal protein that is a component of the 40S subunit. The protein belongs to the S15P family of ribosomal proteins. It is located in

Target Details

the cytoplasm. The protein has been shown to bind to the 5.8S rRNA in rat. The gene product of the E. coli ortholog (ribosomal protein S15) functions at early steps in ribosome assembly. This gene is co-transcribed with two U14 small nucleolar RNA genes, which are located in its third and fifth introns. As is typical for genes encoding ribosomal proteins, there are multiple processed pseudogenes of this gene dispersed through the genome.

Gene ID: 6207

UniProt: [P62277](#)

Application Details

Application Notes: IHC 1:100-1:200 IF 1:50-1:200

Restrictions: For Research Use only

Handling

Format: Liquid

Concentration: 1 mg/mL

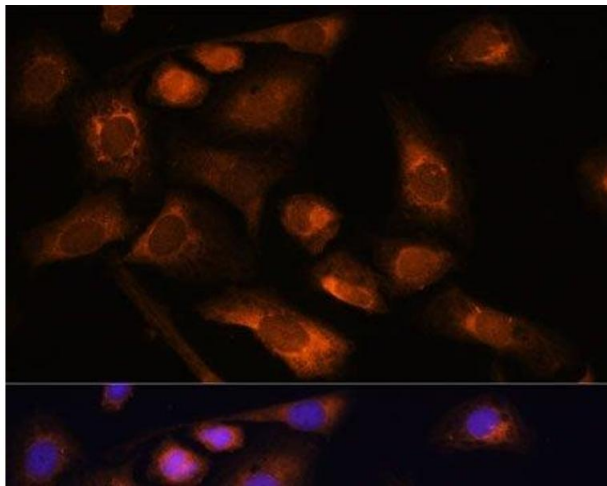
Buffer: PBS with 0.02 % sodium azide, 50 % glycerol, pH 7.3

Preservative: Sodium azide

Precaution of Use: This product contains Sodium azide: a POISONOUS AND HAZARDOUS SUBSTANCE which should be handled by trained staff only.

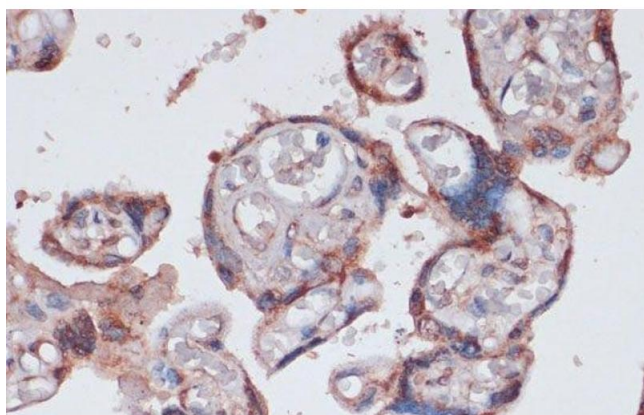
Storage: -20 °C

Storage Comment: Store at -20°C. Avoid freeze / thaw cycles.



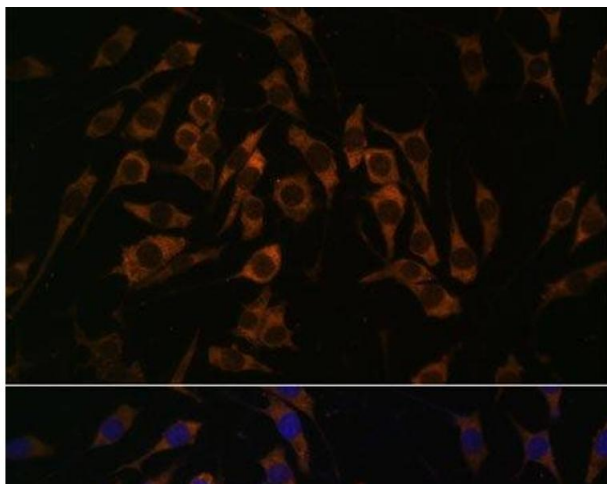
Immunofluorescence

Image 1. Immunofluorescence analysis of U-2 OS cells using RPS13 Polyclonal Antibody at dilution of 1:100. Blue: DAPI for nuclear staining.



Immunohistochemistry (Paraffin-embedded Sections)

Image 2. Immunohistochemistry of paraffin-embedded Human placenta using RPS13 Polyclonal Antibody at dilution of 1:100 (40x lens).



Immunofluorescence

Image 3. Immunofluorescence analysis of L929 cells using RPS13 Polyclonal Antibody at dilution of 1:100. Blue: DAPI for nuclear staining.