



[Go to Product page](#)

Datasheet for ABIN7258654

anti-EDIL3 antibody

1 Image

Overview

Quantity:	200 µL
Target:	EDIL3 (DEL1)
Reactivity:	Human
Host:	Rabbit
Clonality:	Polyclonal
Conjugate:	This EDIL3 antibody is un-conjugated
Application:	Immunofluorescence (IF)

Product Details

Immunogen:	A synthetic peptide of human EDIL3 (NP_005702.3).
Isotype:	IgG
Characteristics:	Polyclonal Antibody
Purification:	Affinity purification

Target Details

Target:	EDIL3 (DEL1)
Alternative Name:	EDIL3 (DEL1 Products)
Background:	The protein encoded by this gene is an integrin ligand. It plays an important role in mediating angiogenesis and may be important in vessel wall remodeling and development. It also influences endothelial cell behavior.

Target Details

Gene ID: 10085

UniProt: [O43854](#)

Application Details

Application Notes: IF 1:50-1:200

Restrictions: For Research Use only

Handling

Format: Liquid

Concentration: 1 mg/mL

Buffer: PBS with 0.02 % sodium azide, 50 % glycerol, pH 7.3

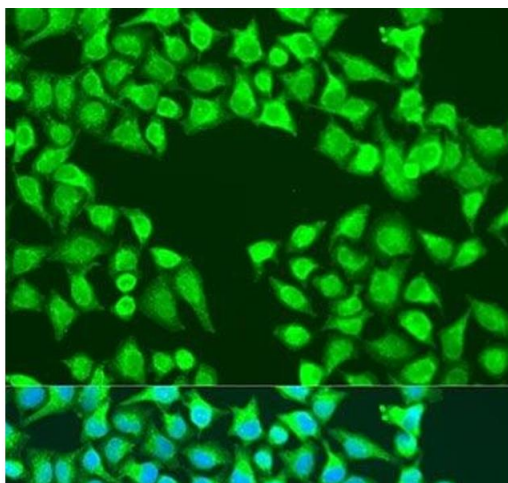
Preservative: Sodium azide

Precaution of Use: This product contains Sodium azide: a POISONOUS AND HAZARDOUS SUBSTANCE which should be handled by trained staff only.

Storage: -20 °C

Storage Comment: Store at -20°C. Avoid freeze / thaw cycles.

Images



Immunofluorescence

Image 1. Immunofluorescence analysis of U2OS cells using EDIL3 Polyclonal Antibody at dilution of 1:100. Blue: DAPI for nuclear staining.