

Datasheet for ABIN7258658
anti-MPHOSPH6 antibody[Go to Product page](#)

1 Image

Overview

Quantity:	200 µL
Target:	MPHOSPH6
Reactivity:	Human, Mouse, Rat
Host:	Rabbit
Clonality:	Polyclonal
Conjugate:	This MPHOSPH6 antibody is un-conjugated
Application:	Western Blotting (WB)

Product Details

Immunogen:	Recombinant fusion protein of human MPHOSPH6 (NP_005783.2).
Isotype:	IgG
Characteristics:	Polyclonal Antibody
Purification:	Affinity purification

Target Details

Target:	MPHOSPH6
Alternative Name:	MPHOSPH6 (MPHOSPH6 Products)
Background:	MPHOSPH6 (M-Phase Phosphoprotein 6) is a Protein Coding gene. Among its related pathways are rRNA processing in the nucleus and cytosol and Gene Expression. Gene Ontology (GO) annotations related to this gene include RNA binding.

Target Details

Molecular Weight: Observed_MW: 22 kDa/23 kDa
Calculated_MW: 19 kDa

Gene ID: 10200

UniProt: [Q99547](#)

Pathways: [M Phase](#)

Application Details

Application Notes: WB 1:500-1:2000

Restrictions: For Research Use only

Handling

Format: Liquid

Concentration: 1 mg/mL

Buffer: PBS with 0.02 % sodium azide, 50 % glycerol, pH 7.3

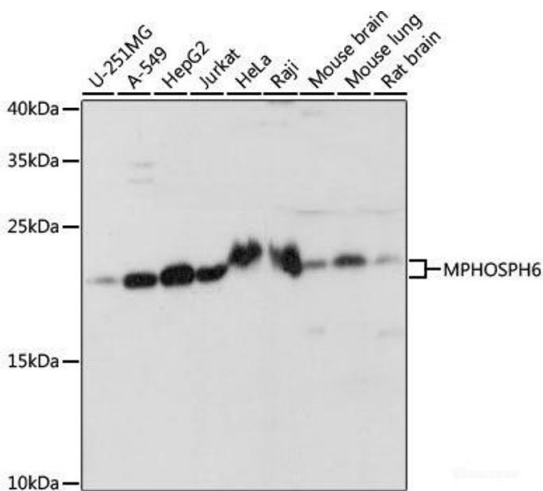
Preservative: Sodium azide

Precaution of Use: This product contains Sodium azide: a POISONOUS AND HAZARDOUS SUBSTANCE which should be handled by trained staff only.

Storage: -20 °C

Storage Comment: Store at -20°C. Avoid freeze / thaw cycles.

Images



Western Blotting

Image 1. Western blot analysis of extracts of various cell lines using MPHOSPH6 Polyclonal Antibody at dilution of 1:1000.