



[Go to Product page](#)

## Datasheet for ABIN7258668 anti-POLR3C antibody

### 1 Image

#### Overview

|              |                                       |
|--------------|---------------------------------------|
| Quantity:    | 200 µL                                |
| Target:      | POLR3C                                |
| Reactivity:  | Human, Mouse, Rat                     |
| Host:        | Rabbit                                |
| Clonality:   | Polyclonal                            |
| Conjugate:   | This POLR3C antibody is un-conjugated |
| Application: | Western Blotting (WB)                 |

#### Product Details

|                  |   |
|------------------|---|
| Immunogen:       | Recombinant fusion protein of human POLR3C (NP_006459.3). |
| Isotype:         | IgG   |
| Characteristics: | Polyclonal Antibody                                       |
| Purification:    | Affinity purification                                     |

#### Target Details

|                   |   |
|-------------------|---|
| Target:           | POLR3C  |
| Alternative Name: | POLR3C ( <a href="#">POLR3C Products</a> )  |
| Background:       | POLR3C (RNA Polymerase III Subunit C) is a Protein Coding gene. Diseases associated with POLR3C include Adiaspiromycosis and Atrial Septal Defect 2. Among its related pathways are Transcription of tRNA and ATP/ITP metabolism. Gene Ontology (GO) annotations related to this gene include DNA-directed 5'-3' RNA polymerase activity and RNA polymerase III activity. |

## Target Details

|                   |  |
|-------------------|--|
| Molecular Weight: | Observed_MW: 63 kDa<br>Calculated_MW: 60 kDa |
| Gene ID:          | 10623  |
| UniProt:          | <a href="#">Q9BUI4</a>                       |

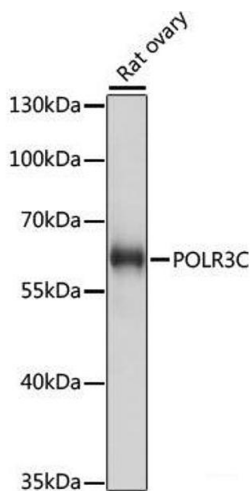
## Application Details

|                    |                       |
|--------------------|-----------------------|
| Application Notes: | WB 1:500-1:2000       |
| Restrictions:      | For Research Use only |

## Handling

|                    |  |
|--------------------|--|
| Format:            | Liquid   |
| Concentration:     | 1 mg/mL  |
| Buffer:            | PBS with 0.02 % sodium azide, 50 % glycerol, pH 7.3  |
| Preservative:      | Sodium azide   |
| Precaution of Use: | This product contains Sodium azide: a POISONOUS AND HAZARDOUS SUBSTANCE which should be handled by trained staff only. |
| Storage:           | -20 °C   |
| Storage Comment:   | Store at -20°C. Avoid freeze / thaw cycles.  |

## Images



### Western Blotting

**Image 1.** Western blot analysis of extracts of Rat ovary using POLR3C Polyclonal Antibody at dilution of 1:1000.