

Datasheet for ABIN7258676

anti-SEC61B antibody**3** Images[Go to Product page](#)

Overview

Quantity:	200 µL
Target:	SEC61B
Reactivity:	Human, Mouse, Rat
Host:	Rabbit
Clonality:	Polyclonal
Conjugate:	This SEC61B antibody is un-conjugated
Application:	Western Blotting (WB), Immunofluorescence (IF)

Product Details

Immunogen:	A synthetic peptide of human SEC61B (NP_006799.1).
Isotype:	IgG
Specificity:	This antibody ist KO validated.
Characteristics:	Polyclonal Antibody
Purification:	Affinity purification
Grade:	KO Validated

Target Details

Target:	SEC61B
Alternative Name:	SEC61B (SEC61B Products)
Background:	The Sec61 complex is the central component of the protein translocation apparatus of the

Target Details

endoplasmic reticulum (ER) membrane. Oligomers of the Sec61 complex form a transmembrane channel where proteins are translocated across and integrated into the ER membrane. This complex consists of three membrane proteins- alpha, beta, and gamma. This gene encodes the beta-subunit protein. The Sec61 subunits are also observed in the post-ER compartment, suggesting that these proteins can escape the ER and recycle back. There is evidence for multiple polyadenylated sites for this transcript.

Molecular Weight: Observed_MW: 12 kDa
Calculated_MW: 9 kDa

Gene ID: 10952

UniProt: [P60468](#)

Pathways: [Protein targeting to Nucleus](#)

Application Details

Application Notes: WB 1:500-1:2000 IF 1:50-1:200

Restrictions: For Research Use only

Handling

Format: Liquid

Concentration: 1 mg/mL

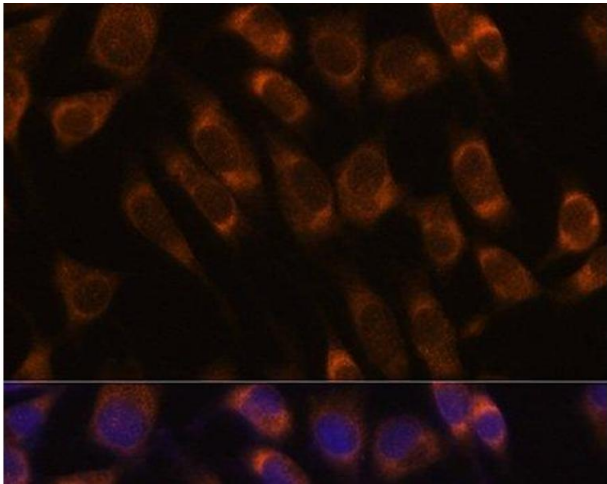
Buffer: PBS with 0.02 % sodium azide, 50 % glycerol, pH 7.3

Preservative: Sodium azide

Precaution of Use: This product contains Sodium azide: a POISONOUS AND HAZARDOUS SUBSTANCE which should be handled by trained staff only.

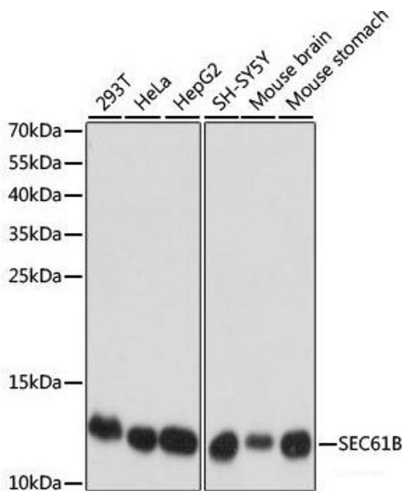
Storage: -20 °C

Storage Comment: Store at -20°C. Avoid freeze / thaw cycles.



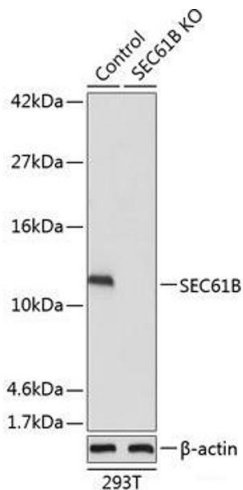
Immunofluorescence

Image 1. Immunofluorescence analysis of L929 cells using SEC61B Polyclonal Antibody at dilution of 1:100. Blue: DAPI for nuclear staining.



Western Blotting

Image 2. Western blot analysis of extracts of various cell lines using SEC61B Polyclonal Antibody at dilution of 1:1000.



Western Blotting

Image 3. Western blot analysis of extracts from normal (control) and SEC61B knockout (KO) 293T cells using SEC61B Polyclonal Antibody at dilution of 1:1000.