



[Go to Product page](#)

Datasheet for ABIN7258730
anti-Plasmolipin antibody

1 Image

Overview

Quantity:	200 µL
Target:	Plasmolipin
Reactivity:	Mouse, Rat
Host:	Rabbit
Clonality:	Polyclonal
Conjugate:	This Plasmolipin antibody is un-conjugated
Application:	Immunofluorescence (IF)

Product Details

Immunogen:	A synthetic peptide of human PLLP (NP_057077.1).
Isotype:	IgG
Characteristics:	Polyclonal Antibody
Purification:	Affinity purification

Target Details

Target:	Plasmolipin
Alternative Name:	PLLP (Plasmolipin Products)
Background:	PLLP (Plasmolipin) is a Protein Coding gene. Diseases associated with PLLP include Prostate Lymphoma and Bardet-Biedl Syndrome. An important paralog of this gene is CMTM8.
Gene ID:	51090

Target Details

UniProt: [Q9Y342](#)

Application Details

Application Notes: IF 1:50-1:200

Restrictions: For Research Use only

Handling

Format: Liquid

Concentration: 1 mg/mL

Buffer: PBS with 0.02 % sodium azide, 50 % glycerol, pH 7.3

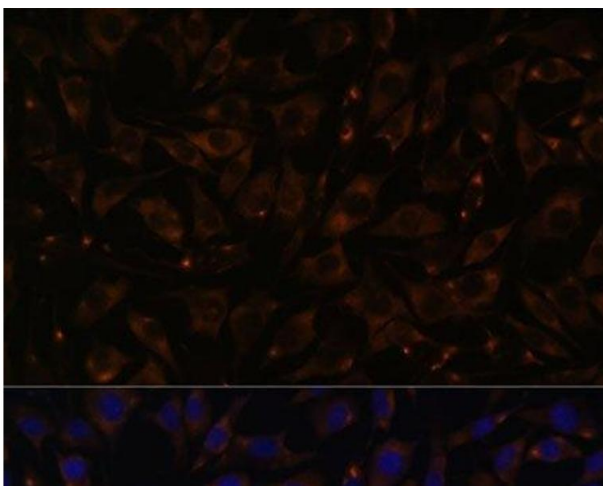
Preservative: Sodium azide

Precaution of Use: This product contains Sodium azide: a POISONOUS AND HAZARDOUS SUBSTANCE which should be handled by trained staff only.

Storage: -20 °C

Storage Comment: Store at -20°C. Avoid freeze / thaw cycles.

Images



Immunofluorescence

Image 1. Immunofluorescence analysis of L929 cells using PLLP Polyclonal Antibody at dilution of 1:100. Blue: DAPI for nuclear staining.