

Datasheet for ABIN7258734

anti-UBE2J1 antibody

3 Images

[Go to Product page](#)

Overview

Quantity:	200 µL
Target:	UBE2J1
Reactivity:	Human, Mouse, Rat
Host:	Rabbit
Clonality:	Polyclonal
Conjugate:	This UBE2J1 antibody is un-conjugated
Application:	Immunofluorescence (IF)

Product Details

Immunogen:	A synthetic peptide of human UBE2J1 (NP_057105.2).
Isotype:	IgG
Characteristics:	Polyclonal Antibody
Purification:	Affinity purification

Target Details

Target:	UBE2J1
Alternative Name:	UBE2J1 (UBE2J1 Products)
Background:	The modification of proteins with ubiquitin is an important cellular mechanism for targeting abnormal or short-lived proteins for degradation. Ubiquitination involves at least three classes of enzymes: ubiquitin-activating enzymes, or E1s, ubiquitin-conjugating enzymes, or E2s, and ubiquitin-protein ligases, or E3s. This gene encodes a member of the E2 ubiquitin-conjugating

Target Details

enzyme family. This enzyme is located in the membrane of the endoplasmic reticulum (ER) and may contribute to quality control ER-associated degradation by the ubiquitin-proteasome system.

Gene ID: 51465

UniProt: [Q9Y385](#)

Application Details

Application Notes: IF 1:50-1:200

Restrictions: For Research Use only

Handling

Format: Liquid

Concentration: 1 mg/mL

Buffer: PBS with 0.02 % sodium azide, 50 % glycerol, pH 7.3

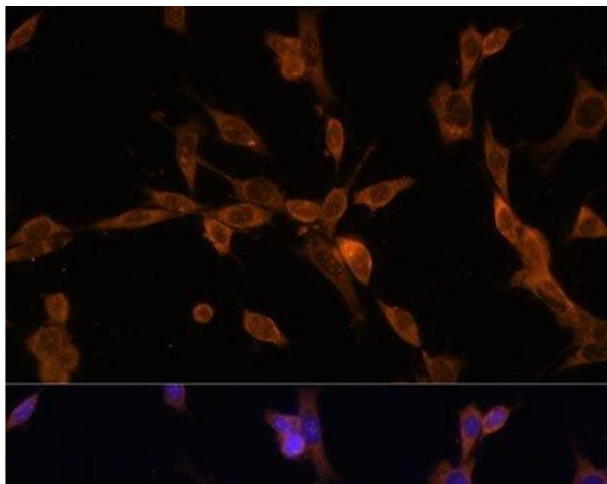
Preservative: Sodium azide

Precaution of Use: This product contains Sodium azide: a POISONOUS AND HAZARDOUS SUBSTANCE which should be handled by trained staff only.

Storage: -20 °C

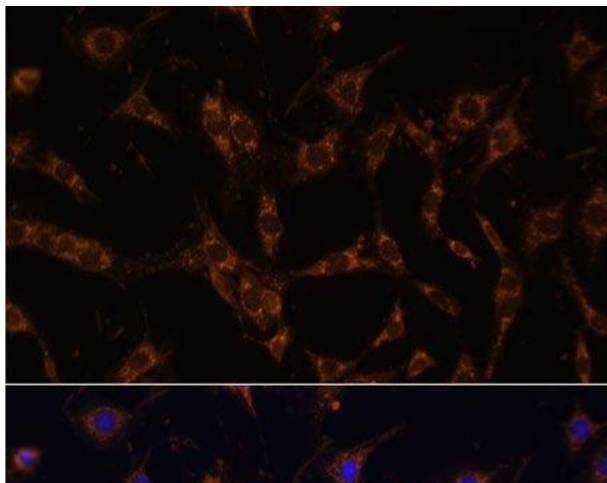
Storage Comment: Store at -20°C. Avoid freeze / thaw cycles.

Images



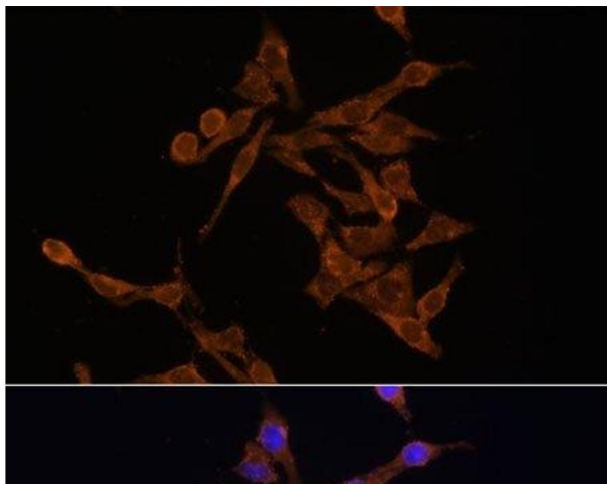
Immunofluorescence

Image 1. Immunofluorescence analysis of NIH/3T3 cells using UBE2J1 Polyclonal Antibody at dilution of 1:100. Blue: DAPI for nuclear staining.



Immunofluorescence

Image 2. Immunofluorescence analysis of C6 cells using UBE2J1 Polyclonal Antibody at dilution of 1:100. Blue: DAPI for nuclear staining.



Immunofluorescence

Image 3. Immunofluorescence analysis of HeLa cells using UBE2J1 Polyclonal Antibody at dilution of 1:100. Blue: DAPI for nuclear staining.