

Datasheet for ABIN7258766

anti-MYOC antibody[Go to Product page](#)**1** Image

Overview

| | |
|--------------|-------------------------------------|
| Quantity: | 200 µL |
| Target: | MYOC |
| Reactivity: | Human, Mouse |
| Host: | Rabbit |
| Clonality: | Polyclonal |
| Conjugate: | This MYOC antibody is un-conjugated |
| Application: | Western Blotting (WB) |

Product Details

| | |
|------------------|---|
| Immunogen: | Recombinant fusion protein of human MYOC (NP_000252.1). |
| Isotype: | IgG |
| Characteristics: | Polyclonal Antibody |
| Purification: | Affinity purification |

Target Details

| | |
|-------------------|---|
| Target: | MYOC |
| Alternative Name: | MYOC (MYOC Products) |
| Background: | <p>MYOC encodes the protein myocilin, which is believed to have a role in cytoskeletal function.</p> <p>MYOC is expressed in many ocular tissues, including the trabecular meshwork, and was revealed to be the trabecular meshwork glucocorticoid-inducible response protein (TIGR). The trabecular meshwork is a specialized eye tissue essential in regulating intraocular pressure, and</p> |

Target Details

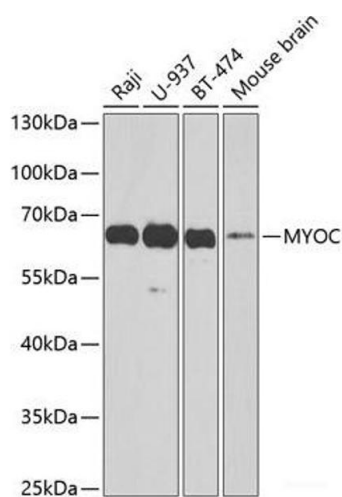
| | |
|-------------------|---|
| | mutations in MYOC have been identified as the cause of hereditary juvenile-onset open-angle glaucoma. |
| Molecular Weight: | Observed_MW: 65 kDa Calculated_MW: 56 kDa |
| Gene ID: | 4653 |
| UniProt: | Q99972 |

Application Details

| | |
|--------------------|-----------------------|
| Application Notes: | WB 1:500-1:2000 |
| Restrictions: | For Research Use only |

Handling

| | |
|--------------------|--|
| Format: | Liquid |
| Concentration: | 1 mg/mL |
| Buffer: | PBS with 0.02 % sodium azide, 50 % glycerol, pH 7.3 |
| Preservative: | Sodium azide |
| Precaution of Use: | This product contains Sodium azide: a POISONOUS AND HAZARDOUS SUBSTANCE which should be handled by trained staff only. |
| Storage: | -20 °C |
| Storage Comment: | Store at -20°C. Avoid freeze / thaw cycles. |



Western Blotting

Image 1. Western blot analysis of extracts of various cell lines using MYOC Polyclonal Antibody at dilution of 1:1000.