



[Go to Product page](#)

Datasheet for ABIN7258768

## anti-CEP85 antibody

### 2 Images

#### Overview

Quantity:	200 µL
Target:	CEP85
Reactivity:	Human, Mouse, Rat
Host:	Rabbit
Clonality:	Polyclonal
Conjugate:	This CEP85 antibody is un-conjugated
Application:	Immunofluorescence (IF)

#### Product Details

Immunogen:	Recombinant fusion protein of human CEP85 (NP_073615.2).
Isotype:	IgG
Characteristics:	Polyclonal Antibody
Purification:	Affinity purification

#### Target Details

Target:	CEP85
Alternative Name:	CEP85 ( <a href="#">CEP85 Products</a> )
Background:	This gene encodes a protein that belongs to the centrosome-associated family of proteins. The centrosome is a subcellular organelle in the animal cell that functions as a microtubule organizing center and is involved in cell-cycle progression. Alternate splicing results in multiple transcript variants.

## Target Details

Gene ID: 64793

UniProt: [Q6P2H3](#)

## Application Details

Application Notes: IF 1:50-1:200

Restrictions: For Research Use only

## Handling

Format: Liquid

Concentration: 1 mg/mL

Buffer: PBS with 0.02 % sodium azide, 50 % glycerol, pH 7.3

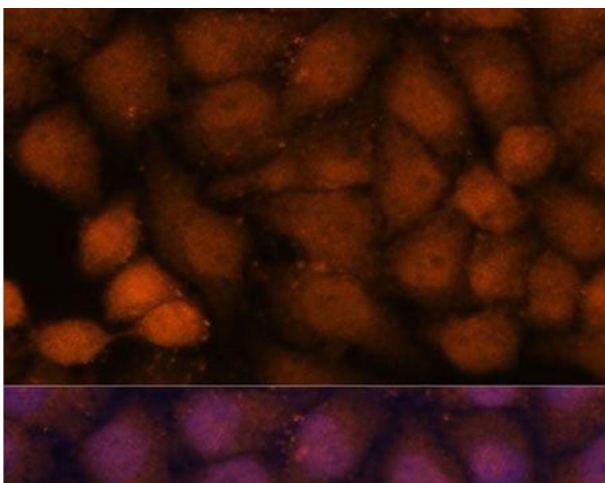
Preservative: Sodium azide

Precaution of Use: This product contains Sodium azide: a POISONOUS AND HAZARDOUS SUBSTANCE which should be handled by trained staff only.

Storage: -20 °C

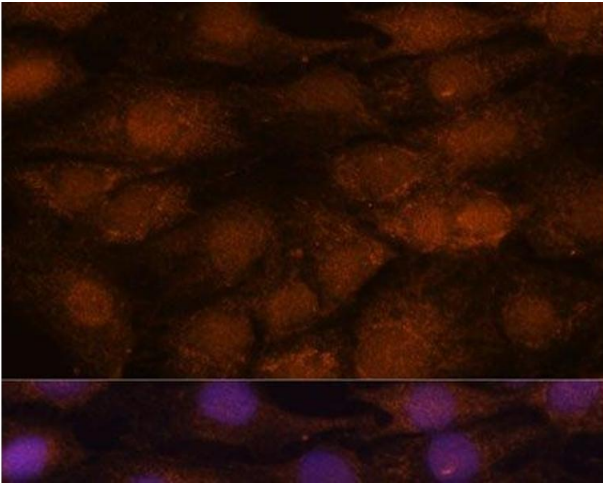
Storage Comment: Store at -20°C. Avoid freeze / thaw cycles.

## Images



### Immunofluorescence

**Image 1.** Immunofluorescence analysis of HeLa cells using CEP85 Polyclonal Antibody at dilution of 1:100. Blue: DAPI for nuclear staining.



### Immunofluorescence

**Image 2.** Immunofluorescence analysis of C6 cells using CEP85 Polyclonal Antibody at dilution of 1:100. Blue: DAPI for nuclear staining.